



Newark
AN AVNET COMPANY

MANUFACTURING SOLUTIONS

Advancing your
facility with industry-
leading products

PLCS
HDMI
MOTOR DRIVERS
SENSORS
SWITCHES
TOOLS
PRODUCTION SUPPLIES

Scan the QR Code to
discover us on the web



OUR PEOPLE POWER YOUR SUCCESS



OUR SERVICES



A global electronics distributor that provides you with local support: In person, via phone or online.



Quoting on volume requirements: Dedicated team to assist in quoting you the best possible price.



Not in catalogue sourcing: When product is not available in our range, our team can help you source it directly from the manufacturer.



Parts list upload (BoM manager): Upload your entire parts list or bill of materials with our automated Parts List Upload (BoM) tool.



Product change notification service: Advanced email warning of material change, obsolete, discontinued or end of stock components.



Calibration service: We offer two levels of calibration on new Test & Measurement products bought from us.



Customised enclosures: We offer standard, modification or complete customisation of enclosures to support your design.

YOUR MANUFACTURING PARTNER



Over **80,000 Industrial Automation & Control** products.



42 leading manufacturers including Festo, Schneider, ABB, Omega, Honeywell.



Our new **Industrial Automation & Control Hub** offers dedicated technical resources for IIoT.



Solutions Guides, Whitepapers, Training modules, Podcasts and more.



Over **350k Industrial products** for your end-to-end factory facility needs – Test, Tools, PPE, Chemicals and more.

HELLO AND WELCOME TO OUR MANUFACTURING SOLUTIONS SHOWCASE

At Newark, we're really excited about Industry 4.0 and the opportunities offered with IIoT to drive efficiencies in manufacturing. Reducing downtime, improving energy efficiency and productivity whilst reducing costs, offer significant benefits for manufacturers. However, the principles of Industry 4.0 can be complex and knowing where and how to begin is challenging.

At Newark, we are working with some of the biggest suppliers to enable customers of all sizes to take advantage of these concepts and have significantly expanded our range of products to support you in driving greater efficiencies in your manufacturing processes.

Explore our highlights of over **350,000** industrial products online.



Simon Meadmore

VP Product & Supplier Management

TABLE OF CONTENTS

05	INDUSTRIAL AUTOMATION & CONTROL	22	SWITCHES
09	OPTIMISING ENERGY EFFICIENCY	24	TEST & MEASUREMENT
11	FANS & FAN ACCESSORIES	26	TOOLS & PRODUCTION
12	FANS & ENCLOSURES	27	TOOLS & PRODUCTION SUPPLIES
14	POWER	31	SINGLE BOARD COMPUTERS
18	RELAYS & FUSES	32	CABLES
20	SENSORS	33	CONNECTORS



Scan the QR Code to
explore IAC online

TECHNICAL RESOURCES CENTRE

Learn innovations,
Stay informed,
Be inspired

A comprehensive selection of products framed into design situations, latest news and trends, design tools and resources to enable you to move from block diagram concept to solution for your vertical segment applications.



Explore our
expanding library of:



Whitepapers



Articles



How To's



Webinars



Podcast

CAM POSITIONER, H8PS SERIES, FLUSH MOUNT, PNP TRANSISTOR OUTPUT



The H8PS8BP is a 8-output flush-mounting Cam Positioner with PNP transistor output. It is popular for its ease-of-use and offers highly visible display with backlit negative transmissive LCD and advance angle compensation function to compensate for output delays.



Order Code
38B702

PLC, MILLENNIUM 3, 8 INPUTS, 4 RELAY OUTPUTS, 24 VDC, TYPE CD12, LED DISPLAY



The 88970041 is a Programmable Logic Controller (PLC) features LCD with 4 lines of 18 characters and configurable backlighting. Selective parameter setting can choose the parameters that can be adjusted on the front panel via selective parameter setting.



Order Code
86K0457

SMART RELAY, ZELIO LOGIC SERIES, 12 DISCRETE INPUTS, 8 RELAY OUTPUTS, 100 TO 240 VAC



The SR2B201FU is a 12-input 8-output Zelio Logic Compact Smart Relay with LCD meter local display. It offers program memory on each power up checks and NO contact for relay output composition.



Order Code
20K3204

CONTROLLER, RELAY, 4 ANALOG I/P, 8 DIGITAL I/P, 4 DIGITAL O/P, 12/24 VDC, EASYE4 SERIES



EASY-E4-UC-12RCX1 is a easyE4 basic control relay. Expandable with the easyE4 series of digital input/output expansions with easy-E4-CONNECT1 connector.



Order Code
52AH6820

DIGITAL I/O MODULE



The easyE4 control relays can be used within many different projects meeting your requirements for a flexible, modular system.



Order Code
52AH6813

WIRELESS I/O MODULE



WISE-4610-NA is a LoRaWAN IoT wireless modular I/O. WISE-4610 features a wireless sensor node based on LoRa network technologies targeting outdoor applications. It provide wireless communication coverage of 5 kilometers and has a long battery life.



Order Code
81AH0334

EASY4 CONTROL RELAY



Control Relay W/Display, 8 I/P, 4 O/P; No. of Digital Inputs:8; No. of Digital Outputs:4; Product Range:easyE4 Series



Order Code
52AH6811

EDGE CONTROLLER



Controller, 2 x ENET/3 x USB/HDMI/CAN/DI/DO; No. of Digital Inputs/Outputs: 4, Product Range: 752 Series



Order Code
48AJ8311

DIGITAL OUTPUT MODULE



DIGITAL OUTPUT MOD, 8O/P, RELAY, 2A/250V; IP / NEMA Rating:IP20; Supply Voltage:- No. of Digital Outputs:8; Product Range:NX Series



Order Code
78AC3599

DIGITAL OUTPUT MODULE



Digital output modules are available in the following variants: 4 DO, 8 DO with 2- and 3-wire technology, 16 DO with or without PLC interface connection. They are mainly used for the incorporation of decentralized actuators.



Order Code
95Y6643

ZEN SERIES PLC



The ZEN-20C1DR-D-V2 is a Programmable Relay with increased functionality and higher precision. This single CPU unit easily provides relay, timer, counter and time switch functions. Wiring work is greatly reduced because separate wiring is not required for devices such as timers and counters.



Order Code
17M9556

CPU MODULE PLC



The FL1F-H12RCA is a 6th-generation SmartRelay CPU Base Module that offers functions to give you even more flexibility and convenience. Advances include extended memory, a brighter display improved analogue and high-speed inputs, an external text display and upgraded programming software.



Order Code
72Y0238

MODICON PLC



LOGIC CONTROLLER, ENET/CAN, RJ45, 24VDC; No. of Digital Inputs:14; No. of Digital Outputs:10



Order Code
55Y5254

GATEWAY SERVER



The EKI-1200 series Modbus gateways are bi-directional gateways for integrating new and existing Modbus/RTU and Modbus/ASCII serial devices to newer TCP/IP network-based devices. The EKI-1221/1222/1224 feature two independent Ethernet ports and MAC addresses to provide redundancy and reliability



Order Code
57AC6233

INDUSTRIAL IOT ROUTER AND GATEWAY



The ICR-3200 4G LTE gateway is the perfect way to connect IP or serial devices via a cellular network. Industrial M2M and IoT applications include SCADA, industrial PCs, HMIs, traffic controllers, CCTV, meters, kiosks, UPS systems, and much more.



Order Code
77AK4359

INDUSTRIAL LORAWAN GATEWAY



The WISE-6610 is a high-performance LoRaWAN gateway that offers reliable connectivity for industrial environments. It supports the LoRaWAN protocol for building LoRaWAN private and public networks, as well as various protocols including MQTT. T



Order Code
54AH9768

MULTIHOP ETHERNET DATA RADIO



DX80ER9M-H is a Sure Cross® MultiHop Ethernet data radio wireless industrial communication device used to create point to multipoint configurations of wireless Ethernet networks. It provides extremely reliable communication in large plants, over long distances, or through difficult terrain.



Order Code
75X9215

ES-246 DEVICE SERVER, ETHERNET TO SERIAL



Ethernet to Serial device server providing access to one RS232 serial port. Data transfer rates up to 1,000,000 baud, coupled with 1Mbit/s line drivers deliver uncompromising performance. Our ES range provides simple instant networked serial ports.



Order Code
67AC3703

ETHERNET SWITCH



Unmanaged fast Ethernet switches with 10/100 baseT(X) (R45 connector) and 100BaseFX. It has a rugged hardware design and is well suited for hazardous locations and maritime environments.



Order Code
44T5720

FAST ETHERNET SWITCH



The Ha-VIS eCon 2000 Fast Ethernet family of unmanaged Ethernet switches is equipped with up to 8 Fast Ethernet ports and allow for cost-efficient and quick expansion and/or reconstruction of network infrastructures.



Order Code
47Y8198

THERMOSTAT



The mechanical thermostats KTO 111 and KTS 111 are two state regulators for use up to 5,000 meters in altitude, thanks to optimized air gap and increased creepage distance. By use of Push-In terminals the thermostat is wired tool-free.



Order Code
24AJ5671

INDUSTRIAL ETHERNET SWITCHES



Plug and play industrial 5 port Fast Ethernet network switch with integrated DIN mounting. The high operating temperature range and IP20 rated case make it ideal for a range of applications



Order Code
39AH5508

POE INDUSTRIAL SWITCHES



A range of 5 port 10/100 Fast Ethernet Switches. Send power and data to remote hardware. No software required. Simply plug in and connect.



Order Code
65AK2057

DIGITAL TIME SWITCHES



Precise time programming for astro / daily / weekly / pulse switching, 16A single and dual relay outputs, 12/24 hour display format, 6 years battery reserve



Order Code
69AK8651

SWITCH SIZED NEON INDICATOR LIGHTS



These snap in, panel mount indicators can be easily fitted next to a switch on a panel to ensure continuity of design. Green, Red and Amber colour options and 13x19mm, 11x30mm or 22x30mm panel cut out sizes.



Order Code
85AJ3417

T120 PANEL INDICATOR LIGHTS



250V dome shaped Neon indicators available in red, green or amber with 10mm, 12mm or 13mm cut-outs.



Order Code
85AJ3427

PTC THERMISTOR RELAYS - MP-225



Uses integrated PTC resistors to monitor and protect Motors against over heating under heavy duty load, high switching frequencies and high operating temperatures & insufficient cooling conditions.



Order Code
69AK8668

LIQUID LEVEL CONTROLLERS



Fully automatic operation enables both draining and filling simultaneously with a single device. Adjustable sensitivity level from 1k to 200k Ohm, 110VAC, 240VAC & 400VAC supply voltage options.



Order Code
69AK8673

IPS TFT DISPLAYS - SCREEN SIZES FROM 4.3" TO 15.6"



These next-generation of IPS TFT HDMI Displays offer a simple & fast method to integrate a display into your product via an LVDS conversion module on board. Ideal for use with Raspberry Pi, UP or iBASE computers.



Order Code
59AK7440

OPEN FRAME TFT DISPLAYS



Choice of 7", 10.1", 10.4" and 12.1" active displays within a metal frame that are ideal for use with SBCs, as an HMI or with any device which has a HDMI output. The displays have projected capacitive touch, HDMI interface, automatic dimming and support Rear or VESA mounting.



Order Code
69AK8708

MOTOR STARTER



The ATSO1N222RT is a Soft Starter for asynchronous motor with heat sink. The Altistart® O1 soft start enhances starting performance by ensuring a smooth and controlled start for asynchronous motors, while providing torque surge suppression during both the starting and stopping operation.



Order Code
19K9000

MOTOR DRIVE



ACS310 drive's dedicated pump and fan features lower operating costs, boost energy efficiency and reduces CO2 emissions.



Order Code
97Y9117

TESYS U STANDARD CONTROL UNIT



The LUCA05BL is a 3-phase 5A plug-in front side mounting standard Control Unit for use in overload and short-circuit basic protection requirements of motor starters. It is compatible with the ASILUFC5, ASILUFC51, LUFC00, LUFN, LULC031, LULC033, LULC07, LULC08, LULC09 and LULC15 communication modules.



Order Code
89H5223

MOTOR CONTROLLER



Motor Controller, BLDC, 5A, 24-48VDC; Control/Drive Type: Motor/Speed Controller Compatible Motor Type: Brushless DC Motors; Output Current Max: 5A; Supply Voltage Min: 24VDC; Supply Voltage Max: 48VDC



Order Code
42AJ7872

DC MOTOR



EC 45 flat Ø42.8 mm, brushless, 50 Watt

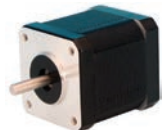


Order Code
15R2903

STEPPER MOTOR



The 4118M-01R0 is a 1.58" bipolar torque Steeper Motor for high and low speed applications.



Order Code
16M4197

PNEUMATIC FLOW CONTROL



Legris pressure regulator fittings are used to stabilize at a given value the pressure applied to pneumatic equipment, whatever the fluctuations of pressure upstream.



Order Code
35M2246

PNEUMATIC VALVE CONTROL



The 81921701 is a miniature pneumatic Position Detector and control by lever with plastic roller. It is made of Zamak body material and 8bar maximum operating pressure.



Order Code
34B3827

PNEUMATIC SWITCH



The 81502160 is a 30 to 120psi monostable Adjustable Pressure Switch with negative output (NO).



Order Code
34B3499

AIR COMPRESSOR SWITCH



Air Compressor Switch, DPST-NC, 200PSI; Contact Configuration: DPST; Switch Terminals: Screw; Product Range: 9013FHG Series.



Order Code
64M4545

FLAT SCREEN HMI



HMI Touch Screen, WVGA, 10.1", 10W; Meter Display Type: TFT LCD Color; Display Size: 268.5mm x 198.5mm; Display Resolution: 1280 x 800 Pixels; Screen Size: 10.1"; Supply Voltage Min: 12VDC; Supply Voltage Max: 24VDC.



Order Code
44Y8828

TOUCH SCREEN HMI



HMI, TFT LCD COLOUR, 3.5", 202X148MM; Meter Display Type: TFT LCD Touch Screen; Display Size: 202mm x 148mm; Display Resolution: 800 x 480 Pixels; Screen Size: 7"; Supply Voltage Min: 20.4VDC; Supply Voltage Max: 27.6VDC.



Order Code
33X3835

TEMPERATURE CONTROLLER



The TC4H-24R from Autonics is a 4-digit single display economical PID Temperature Controller. The TC series is one of the most temperature controlling solution with essential functions and improved performance



Order Code
22T3613

TEMPERATURE CONTROLLER



The E5CC-RX3A5M-000 is a digital temperature controller. The controller will save time and effort in set-up and operation, while enabling faster and more accurate monitoring/control of process.



Order Code
05W3885

ANALOG PANEL METER



The PM-50 meters are designed to increase operator productivity, expose critical plant floor data, and aid in project scheduling and process improvements. Easily relatable intuitive graphical display. Secondary displays provide even more data.



Order Code
72AJ5676

DIGITAL PANEL METER



Amik 200 is a compact multifunction instrument which measures important electrical parameters in 3 phase 4 Wire and 3 phase 3 Wire Network & replaces the multiple analog panels.



Order Code
70Y5477

SMART GRAPHICS DISPLAY



The OM-SGD Series is a family of panel meters with smart graphics display. The configuration software is compatible with Windows® XP (SP3), Vista, 7 and 8 and can be downloaded free online at OMEGA.



Order Code
39AH7190

H3CA SERIES TIMER



The CX202A6 is a Microprocessor Timer with 199.99 seconds to 199.98 hours delay. Supports On-delay/standard start, OFF-delay/reverse start, interval/one-shot, asymmetrical repeat cycle. Timer is housed in a standard 15 terminal CYCL-FLEX® plug-in case.



Order Code
01B2134

TIMER



The LT4HW-AC240VS is a Digital Twin Timer with screw terminals, individual setting can be performed on each of 1 and 2 timers. This timer works in 3 operating modes and has a brand new bright 2-color back light LCD display.



Order Code
53M8175

CURRENT SHUNT



Shunt, Base Mounted, 150A, 50mV; Current Rating:150A; Accuracy %:0.25%; Product Range:TM Series; Accuracy:± 0.25%; Sensing Element: Copper Alloy; Voltage Rating:50mV



Order Code
04M7558

DIGITAL TIME SWITCHES



Digital (analogue-style) time switch, daily/weekly programming can be programmed in "Classic" mode via the joystick, or "Smart" mode via smartphones with NFC communication, they have minimum time interval setting - 30 minutes and are easily configurable for daily or weekly programming.



Order Code
10AC9866

POWER ANALYZER METER



The WM20AV53H from Cargo Gavazzi is a power analyzer. It is a modular power analyzer for single, two and three phase systems. This power analyzer is made up of a main unit that displays measurements on LCD displays, digital output module and communication module.



Order Code
14AC1831

POWER METER



APM-PWR-APO is a APM power meter for single-, split- and 3-phase applications. It measures active (W), reactive (VAR) and apparent (VA) power. User-programmable scale and custom alarm messages display critical parameters and immediately alerts operators when a parameter is out of range.



Order Code
40AH1874

COUNTER



The CUB4L020 is a Miniature Electronic Counter with red backlight display. It has a lightweight, high impact plastic case with a clear viewing window. The sealed front panel with the silicone rubber reset button meets NEMA 4X/IP65 specifications for wash-down and/or dusty environments, when properly installed.



Order Code
46M3293

SAFETY LIGHT CURTAIN



MINI-ARRAY BASIC Two-Piece Measuring Light Curtain configured for material handling and logistics applications with auto-stream serial output, two discrete outputs, and EIA-485 communication.



Order Code
08AK8953

PART SENSING LIGHT SCREEN



The LX3RQ emitter and receiver pair produce a strobed web of modulated light beams in 12 lengths and two sensing ranges. Simple, economical and highly reliable means of sensing small parts or flat items which pass anywhere through the light screen.



Order Code
99H0171

SIGNALING CONDITIONER SWITCH AMPLIFIER



The IM1-22EX-T is a 2-channel Isolating Switching Amplifier equipped with intrinsically safe input circuits. The sensors according to EN 60947-5-6 or potential-free contact transmitters can be connected to the device. The output circuits feature 2 potential-free and short-circuit proof transistors.



Order Code
37R2187

ANALOG TIMER



The GT5Y-4SN1A100 is an ON-delay SPDT Analog Timer with plug-in termination and 4-changeover relay. The GT5Y series timer uses the same sockets and hold-down clips as IDECs RY4S and RU series relays, 4 time ranges, power ON and timing out LED indicators and control settings by hand or screwdriver.



Order Code
66F4213

PRESSURE GAUGE



DPG108 is a battery powered digital pressure gauge, making for easy on-site installation. The DPG108 uses a high-precision piezo-resistive pressure sensor.



Order Code
32AH9141

HOW TO OPTIMISE ENERGY EFFICIENCY IN FACTORY PRODUCTION SYSTEMS?

Electric motors are the main power units behind almost all automation devices in production plants. Over 40 percent of generated electricity is consumed by industry and two-thirds of energy is used by electric motors. Losses are an inevitable part of running a motor and they directly affect efficiency. Losses are minimised by using higher cutting edge motor designs, proper motor control selection, and considering the torque of the motor in high-precision automated production systems.



Figure 1 describes the main elements in an automated machine or process found in a modern factory. The efficiency of the motors and the whole production process is determined by multiple control layers. The first control layer adjusts the power inverter switching sequence to manage the motor voltage and current and enhance torque production efficiency.

Next is the position and speed controller that operates the machine efficiently. In process equipment, this could be a sequence of speed or position orders to perform an assembly function, whereas, in automation equipment, this could be a sequence of speed or position commands to execute an assembly function.

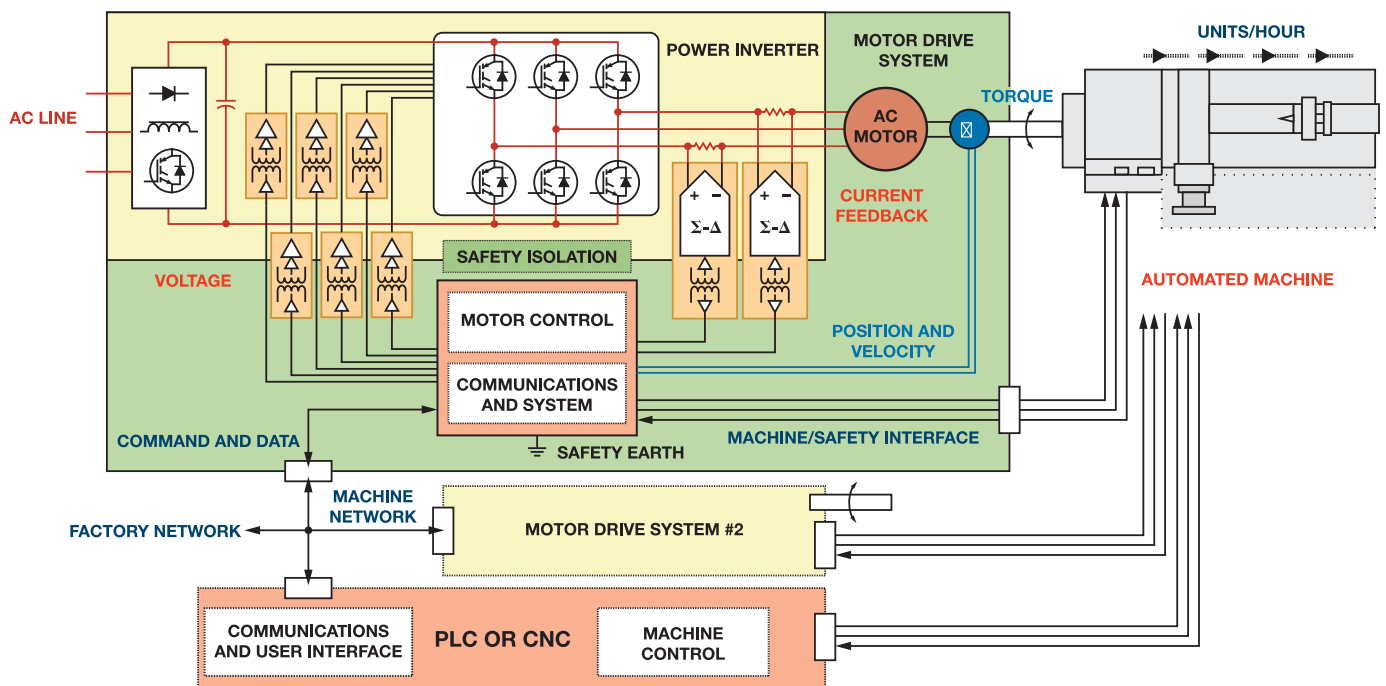


Figure 1: Block diagram of automated machine control system

In the latter scenario, the response time of the speed control will be more critical to the machine controller than torque production efficiency. As multiple motors are now synchronised across high-speed data networks that are also connected to the factory network, the communications and systems layer is becoming increasingly important.

The torque produced per amp supplied at any given speed and terminal voltage influences motor efficiency. Torque is generated by **electric motors** by forces that tend to align their internal magnetic fields. When the stator currents are synchronised with the rotor motion to maintain continuous field misalignment, AC motors produce constant torque. The frequency of the motor currents is closely connected to the ac motor speed, therefore speed regulation necessitates the use of a variable frequency voltage source, such as VSDs or **VFDs**.

When the rotor-stator field misalignment is at its maximum, the efficiency is maximum. Motor efficiency also depends upon motor construction and particularly the rotor field structure. Permanent magnet synchronous motors (PMSM) are more efficient, since no current is required to magnetise the rotor field. Because of their prominent magnetic core construction, ultrahigh efficiency interior permanent magnet (IPM) motors generate additional torque.

Using soft starters in AC induction motors:

When starting, the AC Induction motor develops more torque than is required at full speed. This stress is transferred to the mechanical transmission system, causing excessive wear and premature failure of chains, belts, gears, mechanical seals, and other components. Rapid acceleration also has a significant influence on electricity supply charges, with high inrush currents drawing +600% of the normal run current. The use of Star Delta only provides a partial solution to the problem. If the motor slows down during the transition time, the high peaks will be repeated and may potentially exceed direct on line current. **Soft starters** provide a reliable and economical solution to these issues by delivering a controlled release of power to the motor, resulting in smooth, step-less acceleration and deceleration, as illustrated in Figure 2.

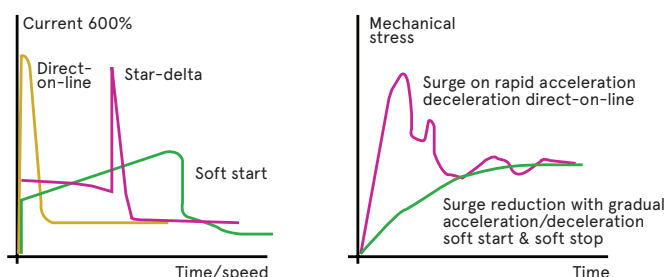


Figure 2: Performance curve as compared to direct-on line, Star-delta and Soft Start

As damage to windings and bearings is reduced, motor life will be extended. Soft Start & Soft Stop is incorporated into three-phase systems, allowing for regulated starting and stopping with a selection of ramp times and current limit settings.

By adopting predictive and condition monitoring:

Condition Monitoring (CM) is the monitoring of several parameters such as equipment vibration and temperature to identify potential concerns such as misalignments or bearing failures. When a vibration analysis reveals a change in the harmonic frequency of rotating equipment components, condition monitoring tools can map equipment degradation.

Frequency analysis can be performed using both vibrometer and microphone data. Continuous Predictive and Condition Monitoring techniques might be used on a range of equipment, including compressors, pumps, spindles, and motors, and they can also be used to detect partial discharge on machines or vacuum leaks. This analysis helps factories to maximise efficiency and equipment availability whilst lowering costs.

Improving efficient motion control with precision isolation and effective communications:

The combination of precision in motion control and communication timing enables shorter machine production cycles and reduces the amount of energy consumed to manufacture each part. PMSM service motors and drives designed for fast response and high precision in speed and position control are used by drive manufacturers to assist automation applications.

The use of high-speed magnetic isolation technology allows for the safe isolation of analog and digital signal voltages without sacrificing speed or precision. Precision **analog-to-digital converters** integrated into the encoder position offer position feedback with up to a 24-bit resolution, enabling high dynamic velocity control at rates as low as 1 RPM.

This level of performance is appropriate for automation applications such as multi-axis milling of precision machine parts, assembly of fine geometry integrated circuits, and injection molding of cell phone parts. Furthermore, to ensure control precision, the motors' motion timing should be perfectly synchronised, because a timing error directly translates into a trajectory error in multi-axis position control.

Industrial Ethernet protocols, such as **PROFINET** and **EtherCat**, use modified Ethernet network interfaces to support real-time data synchronisation with clock jitter as low as 1µs. These network interfaces support both synchronised motion control and factory network connectivity for production system management.

4600N - AC AXIAL FAN



AXIAL FAN, 119MM x 119MM x 38MM, 115VAC; Nominal Rated Voltage AC:115V; Fan Frame Type:Square; Fan Frame Size:119mm; External Depth:38mm; Bearing Type:Sleeve Bearing; Air Flow - CFM:105.9CFM; Noise Rating:50dBA; Power Rating:18W



Order Code
86K9858

RER125-19/14N - FAN BLOWER



The RER125DC series compact DC Centrifugal Fan for electronics cooling with unbeatable high-pressure specialists in centrifugal design with 90° air deflection and carefully optimized impellers. Ideally match for highly compact 1U and 2U rack-mount servers.



Order Code
86K9748

A2D250-AA06-71 - AC AXIAL FAN



A2D250-AA06-71 AC Axial Fan, 230V / 400V, Circular, 250 mm, 82.5 mm, Ball Bearing



Order Code
02E9010

W2E250-HL06-01 - AC AXIAL FAN



The W2E250-HL06-01 is a 230VAC Axial Fan with a wall ring, ball bearing, terminal power connection and 1-phase 2-pole motor with operating capacitor. Sheet steel, coated in black impeller, die-cast aluminum wall ring, variable cable exit.



Order Code
11J4700

OD3010-12HB01A - DC AXIAL FAN



OD3010 Series, DC Fan - 5V, 12V, Square. Frame and impeller: PBT, UL94V-O plastic. Connection: 2x Lead wires 28AWG, Motor: Brushless DC, auto restart, impedance and polarity protected.



Order Code
89AH2547

D-329, CABLE ORGANIZER



CABLE CARRIER, STEEL, CLEAR; Cable Organizer Type:Two Point Mount Cable Carrier; Product Range:D-329 Series Cable Carrier; Colour:Clear Zinc Plating; External Height:30"; External Width:1.5"; Material:Steel



Order Code
51F4102

AHC110E, CORROSION INHIBITOR EMITTER



Corrosion Inhibitor, Enclosure; Coating Type: Corrosion Protection; Coating Applications: Electrical Enclosures, Boxes, Consoles and Wireways; Dispensing Method: Capsule



Order Code
06B4646

R2E220-AA40-23, FAN BLOWER



AC Motorized Impeller, 220MM x 63MM, 230VAC; Blower Type: Motorized Impeller; Supply Voltage: 230VAC; Voltage Type: AC; Fan Frame Size: 220mm; External Depth: 63mm; Air Flow - CFM:530CFM; Air Flow - m3/min: 14.84m3/min; Noise Rating: 74dBA



Order Code
86K9785

4600X, AC AXIAL FAN



AXIAL FAN, 119MM x 119MM x 38MM, 115VAC; Nominal Rated Voltage AC:115V; Fan Frame Type:Square; Fan Frame Size:119mm; External Depth:38mm; Bearing Type:Sleeve Bearing; Air Flow - CFM:106CFM; Noise Rating:50dBA; Power Rating:18W



Order Code
88K2738

ADSV2536BK, RACK SHELF



SHELF, ADJ, STEEL, 1U, 25" X 19", BLACK; Rack U Height:1U; External Width - Metric:483mm; External Depth - Metric:914.4mm; For Use With:Hammond Racks & Rack Cabinets; External Width - Imperial:19"; External Depth - Imperial:36"



Order Code
58Y6780

5214NH - DC AXIAL FAN



The 5214NH is a 24VDC standard or basic high speed Axial Fan with speed signal, ball bearing and wire leaded power connection. Fibreglass-reinforced plastic (PBT) housing and fibreglass-reinforced plastic (PA) impeller.



Order Code
86K9872

ASB0305LA-DR00 DC AXIAL FAN



5 V, Square, 30 mm, 10 mm, Sleeve Bearing, 3.21 CFM



Order Code
70AH3056

3231, METAL ENCLOSURE



BOX, SHIELDED, ALUMINIUM, BLUE; Enclosure Type:Multipurpose; Enclosure Material:Aluminum; External Height - Metric:35.05mm; External Width - Metric:57mm; External Depth - Metric:29mm; Body Color:Blue; External Height - Imperial:1.38"



Order Code
35F3504

B-308, MOUNTING BRACKET



MOUNTING BRACKET, C-300 SLIDES, STEEL; Enclosure Material:Steel; External Height - Metric:44.2mm; External Width - Metric:184mm; For Use With:C-300 Series Slides; External Height - Imperial:1.74"; External Width - Imperial:7.3"



Order Code
51F4073

4314, DC AXIAL FAN



AXIAL FAN, 119MM x 119MM x 32MM, 24VDC; Supply Voltage VDC:24V; Fan Frame Type:Square; Fan Frame Size:119mm; External Depth:32mm; Bearing Type:Ball Bearing; Air Flow - CFM:100.06CFM; Noise Rating:45dBA; Power Rating:5W



Order Code
88K2736

2406KL-05W-B59-L50, DC AXIAL FAN,



DC FAN, AXIAL, 60MM X 60MM X 15MM, 24V; Supply Voltage VDC:24V; Fan Frame Type:Square; Fan Frame Size:60mm; External Depth:15mm; Bearing Type:Ball Bearing; Air Flow - CFM:18.3CFM; Noise Rating:34dBA; Power Rating:2.4W.



Order Code
27M3349

34561-484, THREADED INSERT



THREADED STRIP, M3, 84HP, 431.3MM, STEEL; Accessory Type:Threaded Insert; For Use With:Horizontal Rails; Product Range:EuropacPRO, PropacPRO, CompacPRO and RatiopacPRO Series



Order Code
64T9880

AD1224UB-F51, DC AXIAL FAN



AXIAL FAN, 120MM x 120MM x 38MM, 24VDC, 380MA; Supply Voltage VDC:24V; Fan Frame Type:Square; Fan Frame Size:120mm; External Depth:38mm; Bearing Type:Ball Bearing; Air Flow - CFM:120.109CFM; Noise Rating:48dBA; Power Rating:9.12W



Order Code
58P0883

ASB0412LA-A - DC AXIAL FAN



12 V, Square, 40 mm, 10 mm, Sleeve Bearing, 4.394 CFM



Order Code
77AH7294

BNDN1000, DIN MOUNTING RAIL



DIN MOUNTING RAIL, 35MM, ALUMINIUM; Accessory Type:DIN Mounting Rail; For Use With:BNH/BN Series Terminal Blocks; Length:1m; Height:10.5mm; Width:35mm; Rail Material:Aluminium; Fixing Centers:51mm.



Order Code
96F6501

DAH1001A, ELECTRIC HEATER



ELECTRIC HEATER, 100W, 0+F-100+F, 115V; Voltage Rating VAC:115V; Output Power:100W; External Height - Metric:139.7mm; External Width - Metric:102mm; External Depth - Metric:122mm; External Height - Imperial:5.5".



Order Code
19M8419

A6AXFN, AC AXIAL FAN



AXIAL FAN, 149MM x 162MM x 38MM, 115VAC, 360MA; Nominal Rated Voltage AC:115V; Fan Frame Type:Circular; Fan Frame Size:172mm; External Depth:38mm; Bearing Type:Ball Bearing; Air Flow - CFM:240CFM; Noise Rating:56dBA; Power Rating:32W



Order Code
92F089

ATEMNC, THERMOSTAT CONTROL SWITCH



The ATEMNC is a Temperature Control Switch made of black molded plastic housing with bimetal temperature sensor. The connections consist of tubular screw terminals for 14AWG.



Order Code
51M8653

EFB0512LA - DC AXIAL FAN,



DC Axial Fan, 12 V, Square, 50 mm, 10 mm, Ball Bearing, 7.5 CFM



Order Code
EFB0512LA

R2E220-AB08-12, FAN BLOWER



AC MOTORIZED IMPELLER, 220MM x 63MM, 115VAC; Blower Type:Motorized Impeller; Supply Voltage:115VAC; Voltage Type:AC; Fan Frame Size:220mm; External Depth:73mm; Air Flow - CFM:629.5CFM; Air Flow - m3/min:17.825m³/min.

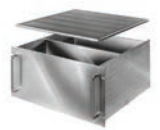


Order Code
75C9660

RM-14212, 19" CASE



CHASSIS, RACK MOUNT, 4.281N, ALUMINIUM; Rack U Height:3U; Enclosure Material:Aluminum; Cabinet Style:Rack Mount; External Height - Metric:133.4mm; External Width - Metric:483mm; External Depth - Metric:437mm; Body Color:Unfinished



Order Code
06M4780

ASB0412VHA-AF00 - DC AXIAL FAN



12 V, Square, 40 mm, 10 mm, Sleeve Bearing, 9.505 CFM



Order Code
77AH7296

C-300-S-124, SLIDE



TELESCOPING SLIDE, 25IN, STEEL; Length:24"; Extended Length:25"; Bearing Style:Solid; Carrying Capacity:85lb; Product Range:C-300 Series Solid Bearing Slide; External Depth:0.49"

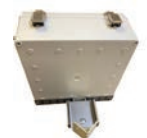


Order Code
93B6957

CWB-15101, MOUNTING BRACKET



WALL BRACKET, METAL CORNER, 13"X3"X2.7"; Enclosure Material:Galvanized Steel; External Height - Metric:68.88mm; External Width - Metric:76.2mm; For Use With:BUD Industries 3" to 14" Plastic Enclosures; External Height - Imperial:2.7"



Order Code
34AK3832

4600N-466, AC AXIAL FAN



FAN, AXIAL, 119MM, 115VAC; Nominal Rated Voltage AC:115V; Fan Frame Type:Square; Fan Frame Size:119mm; External Depth:38mm; Bearing Type:Sleeve Bearing; Air Flow - CFM:105.9CFM; Noise Rating:50dBA; Power Rating:18W.



Order Code
03P9511



Standard Power Solutions

Modular Power



NMP Series



: The premium series



: The best cost-performance series



Enclosed Type



LRS/SE/RS/
RD/RT/RQ Series



HRP-N3 Series



UHP Series



HEP Series



RSP/RST/SHP Series



DIN Rail Type



MDR Series



HDR Series



SDR/NDR/EDR
WDR//TDR Series



DRS Series



DRC Series



PCB Type



EPS/EPP/
PSC Series



IRM/MPM/
MFM Series

Smart Controller



CMU2 Series

System Power



Dxx-3200 Series



DC/DC Converter



RSD Series



DDR/DDRH Series



NSD/NID Series



Module Type

Green Adaptor



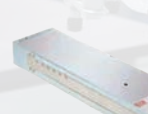
GST/GSM/
GEM/SGA Series



Charger & Inverter



NPB/NPP Series



RPB/RCB Series



ENC Series



GC Series



NTS/NTU Series



UNINTERRUPTIBLE POWER SUPPLY (UPS), INDUSTRIAL 850VA / 510W, 120 V, 120 V, 2 MIN


DIN850AC is a 850VA, 510W, 120V AC DIN rail industrial UPS—hardwire input/output. This DIN rail UPS battery backup offers network-grade power protection for industrial and machine control installations.

Order Code
69AK9776

EV PEDESTAL, SINGLE PORT, WALL CHARGER


Recharge your electric vehicle faster and cost effectively with Eaton Green Motion EV single port pedestal charger. Multiple installation options that maximize flexibility.

Order Code
63AK2674

AC/DC DIN RAIL POWER SUPPLY (PSU), 1 OUTPUT, 25.2 W, 12 V, 2.1 A


10–100W Low Profile DIN Rail Mount Power Supplies. Features include, high efficiency, up to 90% @ 230VAC, UL1310 Class 2 Compliant, Low No Load Consumption and more.

Order Code
02AC9440

AC/DC OPEN FRAME POWER SUPPLY (PSU), ITE & MEDICAL, 1 OUTPUT, 40 W, 90V AC TO 264V AC


The ECM range of single and multiple output AC-DC, 40–60 W power supplies from XP feature the world's smallest footprint for units of these ratings. Both are just 2" x 4" (50.8 mm x 101.6 mm) and 1.2" (30.48 mm) high.

Order Code
71J0110

RECHARGEABLE BATTERY, 11.1 V, LITHIUM ION, 2.6 AH, 18650, CONNECTOR


LITHIUM ION PACKS AND CHARGERS COST SHEET, Individually boxed for safe shipment, Eco-Friendly, Long Life, Light weight and Fully PCB protected.

Order Code
56AJ3224

AC/DC PCB MOUNT POWER SUPPLY (PSU), FULL BRICK, ITE, 1 OUTPUT, 160 W, 24 V, 6.66 A


ASB160PS24 is a 160W ASB160 series low profile, full brick, baseplate cooled AC to DC power supply which requires no external components.

Order Code
67AK7236

NON ISOLATED POL DC/DC CONVERTER, 300 W, 5 V, 28 V, 12.5 A, FIXED, ADJUSTABLE


RGC series is a ruggedized non-isolated DC-DC buck-boost converter. The module has the industry standard 1/16th brick pin-out, are qualified to MIL-STD-810G (shock and vibration) and designed for fan-less, conduction cooled applications.

Order Code
69AK7665

EV PEDESTAL, DUAL PORT, WALL CHARGER


Eaton Green Motion EV dual port pedestal charger enables faster and cost effective recharging of electric vehicles. Multiple installation options available like direct connect kit, direct connect kit + junction box, EV wall charger.

Order Code
63AK2673

AC/DC DIN RAIL POWER SUPPLY (PSU), 1 OUTPUT, 36.4 W, 24 VDC, 1.3 A


The SDP1-24-100T is a 24V/36.4W 1-output DIN-rail mount AC to DC Power Supply features a compact size and lightweight, overvoltage and continuous short-circuit protection.

Order Code
78K6122

AC/DC OPEN FRAME POWER SUPPLY (PSU), MEDICAL, 1 OUTPUT, 150W @ 200LFM, 100 W, 85V AC TO 264V AC


The TLP150N-99S24J is a 1-output 150W open-frame AC/DC Power Supply with adjustable and fixed output voltage. It offers overvoltage, overcurrent and short-circuit safety protections. Because of its low profile, it fits 1U applications.

Order Code
77K8841

AC/DC POWER SUPPLY, DESKTOP, ITE, 1 OUTPUT, 160 W, 12 V, 12.5 A


The AEJ160 series of ITE approved desktop adapter features active power factor correction and comply with the latest international efficiency requirements including Level VI and EU2019/1782.

Order Code
67AK7412

UNINTERRUPTIBLE POWER SUPPLY (UPS), 500VA / 300W, 120 V, 120 VAC, 4.2 MIN


SDU AC – B series DIN rail uninterruptible power supply. It is suitable for use in programmable logic controllers, factory automation, robotics, conveying equipment and computer based control systems.

Order Code
89AH0110

NON ISOLATED POL DC/DC CONVERTER, ITE, 500 W, 3.3 V, 24 V, 33 A, ADJUSTABLE


i7A series non-isolated DC-DC step-down converter ideal for creating additional high current/high power output voltage rail from a single output power supply.

Order Code
05AJ8738

RECHARGEABLE BATTERY, 3.6 V, NICKEL METAL HYDRIDE, 80 MAH, PCB PINS


The COMP-16-2NMH is a 3.6V/80mAh Rechargeable Battery that features a nickel metal hydride technology and PCB pins terminals. This comp-series battery is ideal for computer (memory back-up).

Order Code
19C9477

UNINTERRUPTIBLE POWER SUPPLY (UPS), 24 V, 3 MIN @ 900W, 120 V, DESKTOP


SMART1500PSGLCD is a 1500VA, 900W, 120V pure sine wave gaming UPS battery backup. This 120V line-interactive UPS provides pure sine wave output in both AC and battery backup modes to keep user gaming PC or gaming console reliably powered

Order Code
61AK7410

Power supply choice made easy

XP Power are committed to helping customers find the right power solution for any application. Our diverse range of AC & DC products come with reliability designed-in and unrivalled service to match.

Open-frame Power Supplies

- 5W to 450W
- World's smallest designs
- ITE & medical (BF) approvals



Enclosed Power Supplies

- 10W to 5kW
- Full user configurability
- ITE & medical (BF) approvals



External Power Supplies

- 5W to 300W
- Level VI & EU CoC Tier 2
- ITE & medical approvals



DC-DC Converters

- 0.25W to 750W
- Through-hole & SMD
- ITE, medical and rail approvals



High Voltage DC-DC

- Outputs up to 25kVDC
- Regulated & proportional
- Single & dual outputs



POWERING THE WORLD'S CRITICAL SYSTEMS

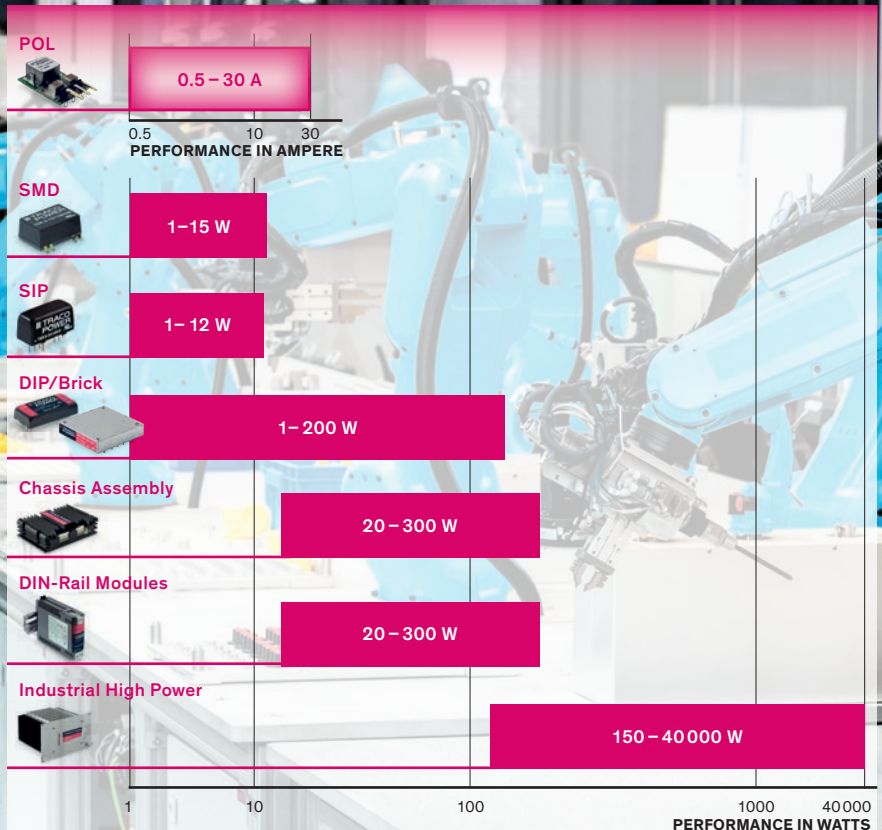
TRACO POWER

Reliable. Available. Now.

Industrial Power Solutions

DC/DC from 1–300 Watt

- Broad application range covering office, manufacturing, industrial, harsh and hazardous environments
- Industrial EMC immunity acc. to IEC 61000-6-2
- Various mounting types: PCB, Chassis-Mount and DIN-Rail
- Open-frame, encapsulated and encased package styles
- 3-years warranty



ISOLATED THROUGH HOLE DC/DC CONVERTER, ITE, 1:1, 1W, 1 OUTPUT, 5 V, 200 MA


The NME0505SC from Murata is an isolated, 1W, single output DC to DC converter in SIP package. It is particularly suited to isolate or convert DC power rails.

Order Code
61K3108

DC/DC CONVERTER, ITE, 1 OUTPUT, 7.5 W, 5 V, 1.5 A, OKI SERIES


The OKI-78SR series are non-isolated switching regulator (SR) DC/DC power converters for embedded applications. The fixed single output converters offer both tight regulation and high efficiency directly at the power usage site

Order Code
72R3616

RECHARGEABLE BATTERY, 12 V, LEAD ACID, 9 AH, QUICK CONNECT


The HRL1234WF2FR is a Rechargeable Battery with F2 Faston tab 250 terminals. It is specially designed for high efficient discharge and long life application.

Order Code
27T6516

AC/DC ENCLOSED POWER SUPPLY (PSU), 1 OUTPUTS, 450 W, 24 V, 18.8 A


24V 18.8A AC/DC Enclosed Switching Power Supply 450W power supply features active surge current limiting and AC range selection. Includes built-in fan for active cooling and LED status indicator.

Order Code
53Y1845

ISOLATED DIN RAIL MOUNT DC/DC CONVERTER, RAILWAY, 4:1, 30 W, 1 OUTPUT, 24 V, 1.25 A


DDR-30G-24 is a DDR-30 series 30W DIN rail type DC-DC converter with main features including easy installation, ultra slim width (35mm), 4:1 ultra wide input voltage, 4KVDC I/O isolation, adjustable output voltage ($\pm 10\%$) and full protective functions.

Order Code
01AH7064

AC/DC DIN RAIL POWER SUPPLY (PSU), ITE, 1 OUTPUT, 91.2 W, 24 V, 3.8 MA


The DRC-24V100W1A is part of the Chrome DIN Rail Power Supply series, which is designed for use in compact cabinets for home automations and the food and beverage industry.

Order Code
52AH7007

AC/DC OPEN FRAME POWER SUPPLY (PSU), ITE & MEDICAL, 1 OUTPUT, 100 W, 90V AC TO 264V AC, FIXED


The MDS series of embedded power supply come with universal AC input at 90Vac to 264Vac. Other features include low touch current, risk management report available and the electric shock protection comply with 2 x MOPP

Order Code
52AH7281

VARIABLE, MANUALLY OPERATED, OPEN, SINGLE PHASE, 50HZ / 60HZ, 120V, 120V


The 3PN116C is a 120V single-phase variable Power Transformer with Powerkote® coils. It is manually operated transformer.

Order Code
32M1447

VARIABLE, PLUG IN, MANUALLY OPERATED, 50HZ / 60HZ, 120V, 140V


The 3PN1010B is a Variable Transformer featured with a ventilated steel case, input line cord and plug, fused NEMA rated output receptacle and an illuminated on/off switch.

Order Code
83F2006

DC/DC CONVERTER, ITE, 1 OUTPUT, 2.5 W, 5 V, 500 MA, AMSROL-78NZ SERIES


Aimtec's AMSROL-78NZ series was developed to meet increasing market demand for compact sizes and higher efficiency. This 0.5A switching regulator hits the mark on these metrics with its 12.50 x 13.50 x 3.50mm open frame, ultra-low height design. It is also a viable replacement to the LM78 linear regulator.

Order Code
25AK2816

AC/DC OPEN FRAME POWER SUPPLY (PSU), ITE, 1 OUTPUT, 150W @ 10CFM, 120 V, 85V AC TO 264V AC, FIXED


The AMEOF120-HAMJZ series is one of Aimtec's compact size 120W AC/DC converter with active PFC, which is also suitable for medical equipment.

Order Code
25AK2747

LED DRIVER, ITE & LED LIGHTING, 42 W, 42 V, 1 A, CONSTANT CURRENT, 90 V


AC-DC LED driver is a Constant Current LED Driver with features including No Flicker, Low Output Current Ripple, IP62 rated, Active Power Factor Correction, Low THD, Short Circuit, Over Voltage, Over Temperature Protection and a 5 Year Warranty.

Order Code
26AK5334

MPIF DIN RAIL POWER SUPPLIES


IEC/EN/UL approved, high efficiency, high reliability DIN Rail Mount power supplies with power ratings ranging from 120W to 480W. 3 year warranty guarantee.

Order Code
99AJ4672

MPM ENCLOSED AC/DC SWITCHING POWER SUPPLIES


IEC/EN/UL approved, cost effective, low no load power consumption, highly efficient, highly reliable enclosed power supplies with excellent EMC performance. Power ratings ranging from 15W to 100W. 3 year warranty guarantee.

Order Code
33AK3400

DIN RAIL DC-DC CONVERTERS


MP-DRD40-12 is a 40W DIN rail mount DC to DC power supply. Approved by UL / cUL, cTUVUS, TUV, CE, Vibration-resistance and Shock resistance standards. Features include, 3:1 wide input range, 3 years warranty, short circuit protection and more.

Order Code
83AH9985

Unlocking the Secrets of Reliable Relays: OMRON's Unique Production Know-How

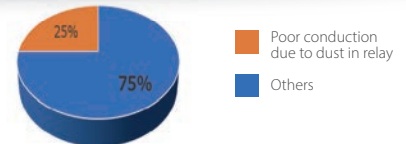
Creating the perfect relays may seem like a straightforward task, but it's a complex process that requires the most advanced manufacturing processes. This ensures that every component inside our relays are precisely assembled and protected from any outside contaminants. Ignoring this crucial step could jeopardize the reliability of the relays and compromise their switching activity.

At times, machines can experience unplanned downtime, with the causes remaining elusive, in many cases restarting the machine or replacing the relays resolves the issue.

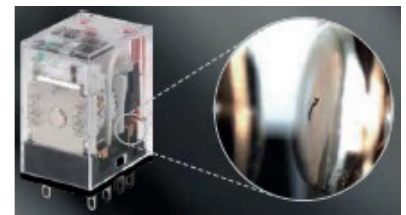
OMRON determined that such incidents are primarily caused by inadequate contact conduction, which frequently results from dust caught between the contacts during manufacturing.

This dust is generated from various sources such as:

- Resin scrap from relay parts
- Textile fibres from operator clothing



OMRON research has revealed that poor conduction of the contacts is the primary cause of relay faults, accounting for approximately 75% of cases.

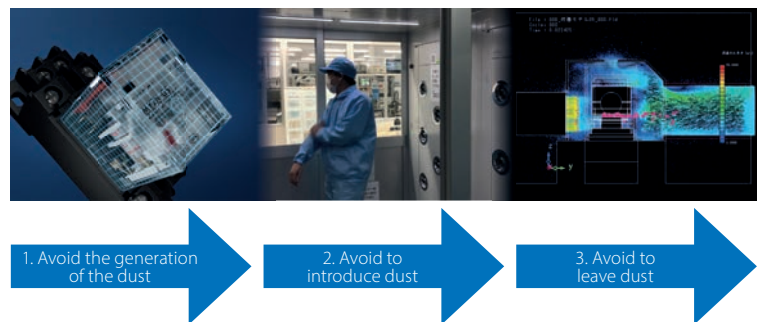


OMRON'S SOLUTION TO PREVENT POOR CONDUCTION IN RELAYS

To improve the reliability of our relay production, OMRON has made three key commitments:

- Provide standardised product design to avoid the generation of dust.
- Produce products in clean rooms with strict entry exit controls to prevent the introduction of dust.
- Utilize OMRON's unique dust removal technology to avoid leaving dust behind during the production process.

With these commitments, OMRON can ensure the highest quality and reliability for your industrial needs.



OMRON relays offer supreme quality

For more than half a century, OMRON has dedicated itself to the design and production of relays and has now become the largest manufacturer of single-brand relays worldwide. Among our most significant electromechanical relay families are the G2RS, MY, G2RV, and LY families. Now in 2023, OMRON has revamped their relay product line, unveiling the slim G2RV-ST relay and promoting the MY-GS-R as the flagship model for the MY family.



G2RV-ST:

The relay itself is a well-known standard 6mm relay with industrial pins, but the socket has been redesigned with enhanced features, such as:

- Security lever to avoid accidental relays fall.
- Super bright Brilliant LED.
- Up to 2.5mm² cable wiring dimensions.
- Captive screw and push-in plus wiring technology available.



MY-GS-R:

The MY-GS-R is the newest member of the MY family, distinguished by its exceptional features, making it the flagship model. These features include:

- Supreme reliability due to fully automated production.
- No polarity required for DC coil specification models with LED, available in both 2-pole and 4-pole types, simplifying wiring and maintenance activities.
- Convenient identification of AC and DC types: red test button + red LED for AC coil, blue test button + green LED for DC coil.
- 2.6mm wide pins for enhanced conductivity in MY plug-in terminals.

POWER RELAY, DPDT, 24 VDC, 5 A, G2RS SERIES, SOCKET, NON LATCHING



The Omron G2RS series are industrial plug-in relays. These electromechanical power relays are slimline, space saving relays with enhanced features mainly used for general purpose applications.



Order Code
14J0623

POWER RELAY, 4PDT, 24 VDC, 5 A, MY SERIES, SOCKET, NON LATCHING



MY(S) series miniature power relay with 4PDT contact form and DC coil. It is a versatile plug-in relay without LED indicator and it reduces wiring work by 60% when combined with PYF-PU push-in plus socket.



Order Code
18J7481

POWER RELAY, SPDT, 24 VDC, 6 A, G2RV SERIES, DIN RAIL, NON LATCHING



The Slim I/O Relay G2RV-SR/ G3RV-SR is a low profile slim I/O relay with width 6.2 mm. Realized about 25% lower profile than conventional products, contributing to further miniaturization of the control panel.



Order Code
90Y9347

SOLID STATE RELAYS



Single phase SSRs with TRIAC or SCR output. Control voltage 4-32VDC or 90-280VAC. Load voltage 240VAC, 480VAC or 600VAC. Wide load current range from 10-125A.

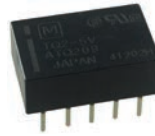


Order Code
24AC9515

SIGNAL RELAY, 5 VDC, DPDT, 1A, TQ SERIES, THROUGH HOLE, NON LATCHING



The TQ series from Panasonic are through hole signal relays. These mechanical relays are mainly used in signal control applications such as communications, measurement equipment, OA equipment and industrial machines.



Order Code
04M7538

SOCKET, DIN, 5MM PITCH, SCREW TERM



For Industrial Power Relay RT pinnings 3.5 mm / 5 mm; relay height 15.7 mm. Features include, new retainer clip with ejection function, easy replacement of relays on a densely packed DIN rail and no reduction of protection class or creepage/clearance with plastic retainer.



Order Code
50M4792

RELAY, 3PST-NO, 250VAC, 16A



the features include printed circuit mount 16 A Power relay, 2 & 3 Pole changeover contacts or NO (≥ 3 mm contact gap), AC coils & DC coils, reinforced insulation between coil and contacts according to EN 60335-1, with 6 mm clearance & 8 mm creepage distance.



Order Code
35M2006

TESYS DECA CONTACTOR



The LC1D25BD is a TeSys D 3-pole Contactor with 3NO power pole and 1NO-1NC auxiliary contacts. TeSys D contactor is designed for perfect integration in control systems. It can be used to create motor starters for any type of application.



Order Code
53M4989

POWER RELAY, 4PDT, 24 VDC, 7 A, 58 SERIES, DIN RAIL, DC



The 58.34.9.024.0050SMA is a 4-pole Relay Interface Module with DC coil, 58.34 series. 4CO (4PDT) contact configuration, AgNi, cadmium-free contact. Ideal interface for PLC and electronic systems. Standard for DC green LED + diode (polarity +A1).



Order Code
31M0823

RELAY, SPDT, 250VAC, 6A



The common features of the 39 SERIES MasterINTERFACE - Relay interface modules include, space saving 6.2 mm wide, connections for 16-way jumper link, integral coil indication and protection circuit and secure retention and easy ejection by plastic clip.



Order Code
48W3828

RELAY, DPDT, 240VAC, 12A



The relay package consisting of PT relay, DIN-rail socket, plastic retaining clip, module and marking tag. It also consists of 2 pole 12 A, 3 pole 10 A or 4 pole 6 A, DC- or AC coil, mechanical and electrical indicator and manual test tab, optionally lockable.



Order Code
97K7886

TESYS DECA CONTACTOR



The LC1D32F7 is a TeSys D 3-pole Contactor with 3NO power pole and 1NO-1NC auxiliary contacts. TeSys D contactor is designed for perfect integration in control systems. It can be used to create motor starters for any type of application.



Order Code
79C9633

AUTOMOTIVE FUSE, FORK LIFT TRUCK, 48 V, 100 A, FAST ACTING, 157.5700 SERIES ROHS COMPLIANT: YES



Fuse Strips Rated 48V - Special Purpose Fuses (not intended for automotive or truck applications). Non-housed fuse strips for battery powered fuses rated at 48VDC. 90° and straight fork type lugs.



Order Code
50M6238

AUTOMOTIVE FUSE, FORK LIFT TRUCK, 48 V, 250 A, FAST ACTING, 20MM X 82MM X 10.5MM ROHS COMPLIANT: YES



Fuse Strips with Housing Rated 48V - Special Purpose Fuses (not intended for automotive or truck applications). Housed fuse strips for battery-powered vehicles. Current rating 35A - 500A, 48 VDC. 90° and straight fork type lugs.



Order Code
35M0314

ASO 10.3X38 FUSE 15A F



This product meets the new UL and IEC photovoltaic standards. It is UL Recognized for 1000 VDC and has high breaking capacity of 20 kA @ 1000 VDC. It has low min. interrupting rating of 1.35 x In and meets the requirements of IEC 61730-2 for PV module safety



Order Code
21T4793



Technical experts providing convenient, tailored and **innovative industrial sensing and connectivity solutions.**



Our Products



Temperature



Pressure



Flow



Force & Strain



Level



Data Acquisition



Test & Inspection



Control & Monitoring



Calibration Systems



Industrial Heaters



IIoT & Wireless



Custom & Configured



THERMOMETRICS INLINE FLOW-THROUGH FLUID TEMPERATURE SENSOR

Amphenol
Advanced Sensors

Monitors the temperature of liquid that passes through it, system control module receives this temperature reading and uses it to control the overall system temperature.



Order Code
24AC6270

K50R RADAR SENSOR : SHORT-RANGE SENSOR FOR ROBUST OBJECT DETECTION



Radar-Based Sensors for detection and measurement of moving and stationary targets.



Order Code
33AK7711

FULL METAL INDUCTIVE PROXIMITY SENSORS WITH IO-LINK COMMUNICATION



On-board IO-Link communication opens up many possibilities, such as easy configuration and setup of the devices and advanced parameter setting.



Order Code
65AK6225

BAS BATTERY AEROSOL SENSOR

Honeywell

The BAS Series Sensors are built to detect the presence and concentration of aerosols such as smoke, liquid and debris in lithium-ion battery packs.



Order Code
65AK6199

CO2 SENSOR MODULE FOR HARSH ENVIRONMENTS

Amphenol
Advanced Sensors

A range of carbon dioxide sensors designed measure CO2 in harsh or difficult environments. Applications include medical, food, transport and agricultural applications including glass houses mushroom sheds and chicken sheds.



Order Code
01AC3557

Q4X RUGGED LASER DISTANCE SENSOR : THE ULTIMATE PROBLEM SOLVER



Durable and robust construction resists mechanical impact, over tightening and extreme vibration.



Order Code
43AJ7032

MC36C COMPACT SAFETY MAGNETIC SENSORS



The MC36C series are encoded safety magnetic sensors with compact housing used to monitor the position of hinged, sliding or removable guards of industrial applications.



Order Code
08AJ1649

5000 SERIES INDUSTRIAL PRESSURE SWITCH WITH SCREW ELECTRICAL CONNECTION

Honeywell

78303-B00000400-14 is a 5000 series pressure switch with screw electrical connection. 5000 Series pressure switch is specifically designed to stand up to extended duty applications.



Order Code
40T3501

BATTERY LEAKAGE DETECTION SENSOR



SGX-BLD2 is a Hydrogen and Battery Leakage Detection sensor that measures H2 concentration when different battery leakage occur through CAN communication.



Order Code
33AK4000

HIGH SPEED OPTICAL LABEL SENSOR



Sensor can be configured to detect the label or the backing paper.



52AH6847

THERMAL REED SENSORS, SCREW TYPE



TRS series screw type thermal reed switch is a highly reliable, precise temperature-sensitive switch ideal for energy conservation.



Order Code
21AJ9315

500A OPEN LOOP CURRENT SENSORS

Honeywell

The CSHV Series are open loop current sensors that use Hall-effect sensing and patented Honeywell technology to bring the best combination of performance and reliability for current sensing applications.



Order Code
65AK6211

Take complete control of your machine.

Material detection regardless of light, shape, color, dust, or density.

Electromechanical pressure switch

9013FHG44J59M1X

Square D Pumptrol



Ultrasonic Sensors
Wide Beam

XXW54P3HPL01DM

Simply easy!
tesensors.com

Telemecanique
Sensors

MINIATURE THERMOCOUPLE CONNECTOR, PLUG, IM-K-M, TYPE K, IEC

The IM-K-M (IEC) from Labfacility is a miniature thermocouple connector with flat pins to suit thermocouple type. Ideal for general purpose use.



Order Code
67C1559

3KG PULL MAGNET THERMOCOUPLE, TYPE K, IEC

Magnet Thermocouple with 2m stainless steel over-braided PFA-PTFE cable fitted with miniature plug.



Order Code
88T2877

PANEL MOUNTABLE CURRENT TRANSDUCER

Bipolar and insulated measurement up to 1500V.



Order Code
99Y8151

HANI CLAMP MOUNT INDUSTRIAL TEMPERATURE SENSOR FOR USE ON PLASTIC PIPES

Monitor the temperature of in-pipe fluid media in your plastic piping system with HANI clamp sensor for plastic pipes. Easy-to-install with zero downtime, this sensor will be a game changer for temperature measurement and control in the most challenging applications.



Order Code
65AK5622

PRESSURE SENSOR, 300 PSI, ANALOGUE, GAUGE, 30 VDC, 1/4" - 18 NPT

PX319 series high performance general purpose pressure transducer uses two state-of-the-art silicon technologies. It has an accuracy of $\pm 0.25\%$ FS BSL (Combined Linearity, Hysteresis and Repeatability).



Order Code
30AC8212

BARREL-STYLE INDUCTIVE PROXIMITY SENSOR

Pepperl+Fuchs offers innovative, high quality inductive sensors to meet the needs of the worldwide automation and process control markets. This product offers accurate, non-contact detection of metallic objects in machinery or automation equipment.



Order Code
22C9477

B5WC BUILT-IN COLOR SENSOR FOR RELIABLE DETECTION OF CHANGES AND DIFFERENCES IN COLOR

B5WC Built-in color sensors from Omron improve equipment maintenance efficiency by monitoring the change in liquid color.



Order Code
61AK0053

FLAT CAPACITIVE PROXIMITY SENSOR

Flat Capacitive Sensor with excellent space efficiency, used for detecting ferrous metal.



Order Code
27M2369

RECTANGULAR STANDARD PROXIMITY SENSOR

TL-Q5MC1 is a rectangular standard inductive Proximity Sensor with heat-resistant ABS resin case and sensing surface.



Order Code
27M2896

INTELLIGENT PARTICLE SENSOR FOR ACCURATE AIR QUALITY MONITORING

IPS-7100-1 is a photon counting readout based, highly sensitive optoelectronic particulate sensor. It is capable of fast data acquisition and readout as well as categorizing particulates based on the size. Adjustable sensitivity controls provide superior accuracy and versatility.



Order Code
45AK2308

SFC6000D MASS FLOW CONTROLLER WITH MULTI-GAS CALIBRATION

20 - 0.04slm flow range Disruptive concept combining plastic body and highly integrated electronics. Small form factor and low weight. High accuracy/repeatability (2% / 0.2% of set point).



Order Code
67AK1903

CO2, HUMIDITY AND TEMPERATURE SENSOR MODULE

Ambient humidity and temperature can be measured by Sensirion's algorithm expertise through modelling and compensating of external heat sources without the need of any additional components.



Order Code
56AC2776

MINIATURE THROUGH BEAM PHOTOELECTRIC SENSOR, W4F SERIES

The Smart Sensors in the W4F product family, which are powered by IO-Link, are ready for the most demanding Industry 4.0 applications. Practical features for intelligent monitoring and predictive maintenance ensure a very high reliability in operation.



Order Code
60AK9208

100LB COMPACT COMPRESSION LOAD CELL

TE Connectivity's (TE) FX29 is a compact compression load cell that offers exceptional price-to-performance in a robust sensor package.



Order Code
40AH0491

Ø54 WIDE BEAM ULTRASONIC SENSOR, OBSTACLE DETECTION SYSTEM, CONFIGURABLE BY SOFTWARE

Ultrasonic Wide Beam Sensor, XX Series



Order Code
68AK0791

SERIES MPI002 VANDAL RESISTANT SWITCH



Manufactured from Stainless Steel, Bulgin's extensive range of vandal resistant security switches are designed with a high resistance to wear and tear, corrosion and harsh use in potentially hostile environments such as access control applications.



Order Code
75M3520

MRSS SERIES MINIATURE ROTARY SWITCH



The MRSS addresses manual programming applications. These high-quality rotary DIP switches are available in size 7.7mm square (horizontal) and 7.2mm square (vertical) for a wide range of possible applications like elevator and security system.



Order Code
60AK9626

SERIES 45 EMERGENCY STOP SWITCHES



Series 45 emergency stop switches offer reliable protection for both man and machine in the event of application malfunctions – on a factory conveyor belt, for instance. Thanks to intuitive operation and IP69K rated features, these switches perform safely and securely as often required in harsh, industrial environments.



Order Code
05AC2265

PV2 SERIES VANDAL RESISTANT SWITCH



The PV2F640SS is an Anti-vandal Switch offers long life expectancy. It features screw terminals, single pole off-(on) function, polished stainless steel body and flat actuator. These can be found on kiosk and public ticket dispenser applications, along with other industrial type applications.



Order Code
24R3494

PTS645 SERIES 6 MM TACT SWITCHES



Designers for power tooling, set top and access boxes, instrumentation and general consumer products turn to C&K's PTS645V series of 6mm SMT side actuated tact switches to give their products the reliability and long life demanded by regular use.



Order Code
59AK7062

SERIES MP0037 VANDAL RESISTANT SWITCH



Manufactured from Stainless Steel, Bulgin's extensive range of vandal resistant security switches are designed with a high resistance to wear and tear, corrosion and harsh use in potentially hostile environments such as access control applications.



Order Code
48F2532

PBES16L SERIES EMERGENCY STOP SWITCH



The PBES16 Series has a 20N actuation force for ruggedized applications to avoid accidental actuations and is also IP65 rated to withstand harsh environments. This series has multiple lighting options, agency approvals, and meets IEC 60947-5-1 & IEC 60947-5-5 standards.



Order Code
50AJ0274

ST4 SERIES SEALED TOGGLE SWITCH



The ST4 Series sealed toggle switches are rated IP68 for dust and moisture protection and offer single pole or double pole circuit functions with 2 or 3 actuator positions. Select from 10 different function options, three electrical rating options, and 17mm metal or 22mm plastic bat actuator.



Order Code
57AJ6016

57 SERIES MINIATURE VANDAL RESISTANT PUSHBUTTON SWITCHES



The Series 57 is a range of miniature, momentary action, rugged panel sealed push-button switches with a round button and bezel. The Series is available with or without LED status illumination. The body and button are manufactured from anon-spark zinc alloy and are velour chrome plated.



Order Code
31C7633

V19 SERIES BASIC SWITCH



Honeywell Sensing and Internet of Things announced a new addition to their MicroSwitch products, the V19 basic switch for appliance customers. The V19 is focused on empowering White Goods designs with a balance between configurability and cost.



Order Code
75AH8766

MP0042/3 VANDAL RESISTANT SWITCH



The MP0042/3 is a momentary Vandal Resistant Switch with screw termination, SS push to make switching, nylon moulding, silver-plated brass tags, polished stainless steel body and button, silver contacts.



Order Code
95M9941

PBES16N SERIES EMERGENCY STOP SWITCH



PBES16 series pushbutton emergency stop switch is a non-illuminated switch. It has a 20N actuation force for ruggedized applications and to avoid accidental actuations and is IP65 rated to withstand harsh environment. Features include, 16mm mounting hole, high actuation force UL and TV agency approved and more.



Order Code
50AJ0283

ST5 SERIES HIGH TEMPERATURE TOGGLE SWITCH



The ST5 series toggle switch series can handle temperatures ranging from -10°C to 125°C. The ST5 offers a single pole or double pole circuit function with two or three positions and offers three electrical rating options.



Order Code
62AJ3543

KSC4 TE SERIES TIRELESS ENDURANCE TACT SWITCH



KSC4 TE tireless endurance tactile switch is a new KSC4 configuration with J leads, a soft actuator and a renewed combination of dome and support, upgrading the lifetime up to 10 million cycles. It's size makes it perfect for demanding applications such as applications in the industrial segment.



Order Code
31AJ3572

YW SERIES CONTROL UNITS



Ensure safety and save wiring time with YW Series Control Units. Main features include Safety Lock Mechanism, Direct Opening Action, Safe Pushbutton Design and more.



Order Code
28X7160

XB4BD21



The XB4BD21 is a 2-position black Voltage Selector Switch with screw clamp terminals. It features 1NO contact configuration and slow-break contact operation function. The switch is made of chromium plated metal bezel with silver alloy contacts.



Order Code
39C6738

D2D SERIES



D2D-1000 Safety Interlock Switch, D2D Series offer offers the minimum contact gap of 3 mm required for power switches as standard equipment. Safety considerations include a double return spring and direct drive positive contact opening feature.



Order Code
93B9088

SERIES B3F



The Omron B3F series are tactile switches. These switches are available in 6mm x 6mm, 12mm x 12mm sizes with different models such as standard, side operated, long durability, high force and high reliability gold plated etc.



Order Code
36K7138

CP1 SERIES



Pushbutton Switch, SPST-NO, 1.5A, SCREW; Product Range: CP1 Series; Panel Cutout Diameter: 22.3mm; Contact Configuration: SPST-NO; Switch Operation: Momentary; Pushbutton Actuator Style: Round Flush; Actuator / Cap Colour: Green



Order Code
14AC1021

AV SERIES



PB SWITCH, SPST-NC/NO, 1A, 30VDC, PANEL; Product Range: AV Series; Panel Cutout Diameter: 19mm; Contact Configuration: SPST-NO, SPST-NC; Switch Operation: Momentary; Pushbutton Actuator Style: Round; Actuator / Cap Colour:Natural



Order Code
32AH7975

PB SERIES



The 1PB5 is a single-pole double-throw (SPDT) miniature Pushbutton Switch with a natural round actuator, ON-(ON) function and solder terminals. It is equipped with HM hermetically sealed switch unit, which has metal-to-metal fusion around the cover, actuator base and mounting holes.



Order Code
23F1867

SERIES 59



The Series 59 is a range of miniature, momentary action, rugged panel sealed pushbutton switches. The Series is available with square or round bezel versions, with or without LED status illumination and in a variety of button types.



Order Code
06WX7470

SL SERIES



PN SL0001-1 C&K's SL series IP67 sealed door interlock switch features push (momentary)/ pull (maintained) motion as well as SPDT and DPDT in 3 different bracket sizes (small, large and extended), multiple mounting configurations.



Order Code
24AK8245

SERIES 82 IP67 ON/OFF SWITCHES



EAO's Series 82 anti-vandal stainless steel On/Off and Standby switches are suitable for 16, 19 or 22 mm mounting and have built-in resistors for easy direct connection to a 12V or 24V supply.



Order Code
33AC4209

PVK4 ANTI-VANDAL SELECTOR SWITCH



Selector Switch Anti-vandal DPDT On-On 2A 24VDC, 2 Position return On-(On), Red Led illumination, Base voltage Keylock Switch DPDT On-On-On 2A 24VDC, 3 Position maintain On-On-On.



Order Code
57AK6054

ANTI VANDAL PUSH BUTTON SWITCHES



IP67 rated illuminated stainless steel Anti Vandal Push Button Switches. Search for skus 69AK7740 to 69AK7743.



Order Code
69AK7741

INDUSTRIAL PUSH BUTTON SWITCHES



SPDT, Momentary, Round Flat, Industrial Pushbutton Switches. Search for skus 69AK7732 to 69AK7737.



Order Code
69AK7732

IP68 POWER-SEALED TOGGLE SWITCHES



IP68 Rated copper alloy, silver plated power-sealed toggle switches. Search for skus 69AK7836 to 69AK7837.



Order Code
69AK7836

IP65 RATED ROCKER SWITCHES



IP65 Rated DPST, On-Off Rocker Switches. Search for Skus 68AK5720 to 68AK5722.



Order Code
68AK5720

HIGH CURRENT ANTI VANDAL PUSH BUTTON SWITCHES



IP65 rated high current stainless Steel anti vandal push button switches. Search for skus 69AK7836 to 69AK7837.



Order Code
69AK7765

1GHZ EIGHT CHANNEL MIXED SIGNAL OSCILLOSCOPE



5 Series Mixed Signal Oscilloscope offers better visibility into complex systems with eight FlexChannel inputs and 15.6" high-definition touchscreen display.



Order Code
83AJ0736

1GHZ SIX CHANNEL MIXED SIGNAL OSCILLOSCOPE



4 Series Mixed Signal Oscilloscope features a highly intuitive user interface, six FlexChannel inputs and 13.3" high-definition touchscreen display



Order Code
02AH4138

1.5MHZ FOUR CHANNEL MIXED SIGNAL OSCILLOSCOPE SOFTWARE BUNDLE



1.5GHz Mixed Signal Oscilloscope bundle features multiple options; ARB generator, low speed serial buses, automotive protocols and Bode plot analysis all included.



Order Code
70AK5603

FOUR CHANNEL 640W PROGRAMMABLE POWER SUPPLY



Bench or rack programmable power supply features four galvanically isolated floating channels, each able to deliver up to 32VDC at 20A, with total output of 384 Watts



Order Code
50AC9964

FOUR CHANNEL 1200W MODULAR POWER SUPPLY MAINFRAME



Slim 1U mainframe accepts up to four individual power supply or DC load modules for nearly endless test configuration possibilities.



Order Code
04AC9309

800W AUTORANGING PROGRAMMABLE POWER SUPPLY



Single output autoranging programmable power supply boasts 4.3" touchscreen display, remote sensing and up to 800W output.



Order Code
53AK1166

120 CHANNEL DATA ACQUISITION UNIT



Combined with a variety of input modules, this DAQ provides measurement and data collection from up to 120 channels.



Order Code
72AC4094

80 CHANNEL DATA ACQUISITION UNIT



DAQ provides measurement and data collection from up to 80 input channels and control of up to 12 output channels.



Order Code
51AC7225

80 CHANNEL DATA ACQUISITION UNIT



High speed DAQ mainframe features eight slots which accept 21 available modules, with scan rate of up to 1,000 channels per second.



Order Code
56J9919

SINGLE CHANNEL FOUR QUADRANT SOURCE METER®



Source measurement meter features a 5" touchscreen which facilitates ease of use while optimizing speed and productivity. Four quadrant operation provides the capabilities of analyzers, curve tracers, and I-V systems at a fraction of their cost.



Order Code
88W3815

SINGLE CHANNEL FOUR QUADRANT SOURCE METER®



Source measurement meter features 100V/10A high current output for higher capacity applications. Four quadrant operation provides the capabilities of analyzers, curve tracers, and I-V systems at a fraction of their cost.



Order Code
77Y6596

SINGLE CHANNEL FOUR QUADRANT SOURCE METER®



Source measurement meter features 200V/10A high current output for higher capacity applications. Four quadrant operation provides the capabilities of analyzers, curve tracers, and I-V systems at a fraction of their cost.



Order Code
44W8036

5MHZ FUNCTION GENERATOR



5MHz single channel function generator provides a standard waveform output and is ideal for EDU environments.



Order Code
22C6860

20MHZ ARB FUNCTION GENERATOR



20MHz ARB Function generator features modulation, sweep, and burst signals, plus LAN and GPIB interfaces that simplify instrument control and transfer of waveforms to the instrument.



Order Code
94T6987

DUAL CHANNEL 20MHZ ARB FUNCTION GENERATOR



20MHz dual channel ARB Function generator features modulation, sweep, and burst signals, plus LAN and GPIB interfaces that simplify instrument control and transfer of waveforms to the instrument.



Order Code
94T6990

ii910 SONIC IMAGER



The ii910 is the all-in-one tool you have been looking for when it comes to all of your leak and Partial Discharge issues.



Order Code
92AH2695

TECHNICIANS DIGITAL MULTIMETER, 110 SERIES, 6000 COUNT, TRUE RMS, AUTO, MANUAL RANGE, 3.5 DIGIT



For general purpose electrical and electronic test requirements, the Fluke 115 true-rms digital multimeter provides the perfect answer. Its simple operation, compact design and ease of use makes it perfect for quick verifications and field service use.



Order Code
83K1718

HANDHELD DIGITAL MULTIMETER, 6000 COUNT, TRUE RMS, AUTO, MANUAL RANGE, 3.75 DIGITS



IP54 rated true RMS digital multimeter with type K temperature function an ideal tool for electricians, service technicians and HVAC professionals.



Order Code
34AC9586

TI-480 PRO THERMAL IMAGER



Fluke Ti480 PRO 60Hz infrared camera capture accurate measurements with this infrared camera making it ideal for working in tough industries. The rugged pistol-grip design enables thermographer to focus on their surroundings. Additionally, the SuperResolution mode feature provides 4x the standard resolution.



Order Code
47AC8649

OSCILLOSCOPE PROBE, HIGH-VOLTAGE DIFFERENTIAL PROBE, 30 MHZ, 240 VAC, 10:1, 100:1, OSCILLOSCOPES



The CT4447 series probe convert these floating signals to low-voltage ground referenced signals that can be displayed safely on any ground-referenced oscilloscope. Compatible with oscilloscopes (with 1Mohm input) from all major manufacturers.



Order Code
32AK6178

POWERPAD IV



The PowerPad® model 8345 is a portable three-phase, Class A Power Quality Analyzer that enables technicians and engineers to measure and perform diagnostics and power quality work on one, two or three phase networks.



Order Code
50AK8502

HANDHELD DIGITAL MULTIMETER, 170 SERIES, 6000 COUNT, TRUE RMS, AUTO, MANUAL RANGE, 3.75 DIGIT



With its precision, reliability, and ease of use, the Fluke 179 True RMS Digital Multimeter is the preferred solution for professional technicians around the world.



Order Code
25C4804

TELEDYNE FLIR ONE EDGE PRO



FLIR ONE Edge Pro is an innovative, rugged thermal imager that wirelessly connects to your smart device so you can remotely inspect out-of-reach targets – or clip it onto your phone or tablet for one-handed operation



Order Code
60AK4377

TEST LEAD SET, ALLIGATOR CLIP TO ALLIGATOR CLIP, 70 V, 5 A, 609.6 MM, 10 LEADS



The 6356-24 is a Test Lead Set with alligator clip at both ends. This patch cord is ideal for use as a temporary jumper wire.



Order Code
94B5529

MODULAR POWER SUPPLY, 1 OUTPUTS, 5 KW, PROGRAMMABLE, 0 V, 200 V, 70 A



EA-PS 10200-70 3U is a PS 10000 series DC laboratory power supply convert the energy from the grid into a regulated DC voltage with a high efficiency. The DC supply operates as a flexible output stage with a constant power characteristic (autoranging), and a wide voltage, current and power range



Order Code
58AK8644

FLUKE SMFT-1000/PRO KIT



Designed for PV professionals that provide installation, commissioning and maintenance services to systems that operate at 1000V DC or under, the SMFT-1000 provides a complete PV testing solution that conforms to IEC 62446-1 standards.



Order Code
57AK7519

HANDHELD DIGITAL MULTIMETER, AC CURRENT, AC/DC VOLTAGE, CONTINUITY, FREQUENCY, RESISTANCE, 4



The Megger MET1000 is a multifunctional voltage and current tester providing electricians and electrical engineers a versatile and robust hand-held all-in-one meter, with detachable test leads.



Order Code
27AJ4148

TELEDYNE FLIR T540-24



The FLIR T540-24 is a FLIR T500 series professional thermal imaging camera with 24° lens. The portable, ergonomic thermal camera offer advanced features like 1-touch level/span and continuous laser assisted autofocus.



Order Code
34AC9593

TEST LEAD SET, INSULATED MINI, ALLIGATOR CLIP TO ALLIGATOR CLIP, 300 V, 7 A, 304.8 MM, 10 LEADS



The BU-00287 is a 12-inch 300V Insulated Mini-Alligator Lead Set. Clip nickel-plated steel with PVC insulator. 22AWG (19/34) copper hook-up wire with 105°C PVC insulation.



Order Code
83F8070

FLUKE SMFT-1000/PRO KIT



Designed for PV professionals that provide installation, commissioning and maintenance services to systems that operate at 1000V DC or under, the SMFT-1000 provides a complete PV testing solution that conforms to IEC 62446-1 standards.



Order Code
57AK7519

LOOP CALIBRATOR



Hand-held loop calibrator with stable performance and up to 0.02% high accuracy. Measures DC voltage/current and loop current, source/simulate DC current. Designed with auto stepping and ramping, the 25% stepping function can be used for fast linearity detection.



Order Code
07AH2541

EARTH GROUND RESISTANCE, CLAMP METER



MP760838 is a clamp earth ground resistance tester, used for testing grounding resistance. This device can quickly and safely measure the grounding system without disconnecting circuit ground lines or the needs of auxiliary electrodes.



Order Code
29AK2509

HUMIDITY METER



The MP780117 from Multicomp Pro is a handheld temperature humidity meter, featuring split-type probe and probe holder.



Order Code
42AH0487

HANDHELD DIGITAL MULTIMETER



The MP730651 is a 1000V true RMS digital multimeter which offers high levels of reliability and security, with a 6000 count display. With a large screen, high resolution analogue pointer display, full scale overload protection and unique appearance design, the device is an extremely practical electrical measuring meter.



Order Code
90AH9782

MINI AC LEAKAGE CURRENT TESTER, 200A



Miniature AC leakage current test meter with LCD display, 30mm shielded transformer jaw and a data hold function that allows for easy reading in dimly lit locations.



Order Code
07AH4392

FIBRE OPTIC TESTER, -50DBM-26DBM



The MP700122 from Multicomp Pro is a handheld optical power meter, used to measure absolute optical power or relative loss of optical power through length of fiber optic wires. This product is designed to be durable, the meter can withstand a 2m drop and has a dust/water resistance rating of IP65.



Order Code
42AH0475

SMART DIGITAL MULTIMETER



MP730835 is a smart digital multimeter, which automatically identifies both the required function and range which leads to improved operation and efficiency.



Order Code
29AK2508

ARBITRARY WAVEFORM GENERATORS, 2 CHANNEL WITH TFT LCD SCREEN



Two new AWGs from Multicomp Pro



Order Code
53AJ6162

TABLET OSCILLOSCOPES



Multicomp Pro now offers a pair of tablet oscilloscopes, with bandwidths of 100MHz and offered in 2 or 4 channel variants.



Order Code
83AH9506

DIGITAL MULTIMETER WITH BLUETOOTH



The MP730624 from Multicomp Pro is a 4 1/2 bit resolution Bluetooth digital multimeter, with data logger and thermometer functionalities.



Order Code
93AH0320

BENCH DIGITAL MULTIMETER



The Multicomp Pro MP730028 is a 5.5 digit bench-type digital multimeter. Featuring a 4" LCD screen, reading rates of up to 150 readings, true RMS AC voltage and current measurements, dual line display support and multi-IO interface.



Order Code
10AH2407

BENCH POWER SUPPLY



The MP710257 from Multicomp Pro is a 300W, 60V/15A wide range programmable DC power supply.



Order Code
42AH2837

LINEAR POWER SUPPLY



The Multicomp Pro MP710087 is a 180W, single-channel, linear benchtop DC power supply with channel outputs of 0-60V / 0.3A x 1CH.



Order Code
42AH0484

DC ELECTRONIC LOAD



Single channel programmable DC electronic load designed for middle and high-end applications. This DC load facilitates online voltage measurements and adjustments or simulate short circuit test using the simple keypad on the front panel.



Order Code
49AJ4840

TEST LEAD SET



Test Lead Set with 3x black and 3x red test leads with various terminating connectors: 2x 4mm banana plug to hook clip, 2x 4mm banana plug to crocodile clips, 2x 4mm banana plug to 4mm banana plug.



Order Code
89AH1098

724 ESD TESTER, WORK STATION MONITOR, 15 %, 35 MM, 165 MM



Single workstation continuous monitor with North America power adapter. Continuously monitors 2 operator dual-wire wrist straps and 1 work surface mat.



Order Code
83F8473

92-6115-US AIR FORCE BLOW-OFF GUN, 65PSI, 120VAC, HAND-HELD



The 92-6115-US is an US-plug Ionizing Blow-off Gun with static-dissipative polyurethane enclosure, tungsten emitter points. This gun features ergonomic design, reduces fatigue and wrist hyperextension. Flexible, lightweight air hose with integral low voltage power cable moves with operator and does not interfere with work.



Order Code
83T4249

44523 TWEEZER, ESD, STRAIGHT, ROUND, STAINLESS STEEL, 125 MM OVERALL LENGTH



Static Dissipative, Special alloyed, Non-Rusting, Stainless Steel. Coated by ESD-Safe Dissipative Material. Anti Magnetic and Acid resistant.



Order Code
28C1851

076722 TORQUE SCREWDRIVER, ADJUSTABLE, 1/4" F/HEX DRIVE, 7" LENGTH, 0.9N-M TO 9N-M, FGA SERIES



076722 is a FGA-40 adjustable torque screwdriver. With the digital adjustable torque setting on the FGA, you can quickly switch torque values in the field or at the workstation, leading to improved productivity.



Order Code
49AK2125

50943 LOCKOUT DEVICE, CABLE, ALL PURPOSE, 8FT SHEATHED METAL CABLE



The 50943 is a red all purpose Cable Lockout with 8-inch sheathed cable. The advantage of using cable lockout is it can be used in a wide variety of ways and can secure unusual energy isolating device that is difficult to lock out using conventional means.



Order Code
19K0026

09183 WRIST STRAP, ANTI-STATIC, ELASTIC, MAGSNAP, JEWEL SERIES



Jewel® MagSnap adjustable wrist strap. Magnetic connection between wrist band and coil cord. Silver impregnated polypropylene knitted band material.



Order Code
20T7239

4006992-01 IONIZER, AIR GUN, TOP GUN SERIES, 120V, HANDS-FREE, 18" ADJUSTABLE GOOSENECK



The Top Gun with Sidekick offers hands-free operation and flexible positioning during assembly and manufacturing processes. A foot pedal controls both ionization and airflow, which reduces compressed air costs and extends the life of the ionizer. The flexible gun mount allows the operator to focus the ionized airflow where it is needed.



Order Code
11J6671

2032-1 CONDUCTIVE BRUSH, TECHCLEAN, 1/2" X 3/8", HORSE HAIR



The 2032-1 from Techspray is a high precision TechClean horse hair brush for cleaning and coating. This brush is used for cold/bucket cleaning, electronic assembly, electronic repair, electrical cleaning, office equipment maintenance and plant maintenance.



Order Code
80K6222

BP-100 TOOL BACKPACK, BALLISTIC NYLON, 20" x 14.5" x 8", 2.87 KG



BP-100 is a Technician's tool bag backpack that features 36 organizer pockets and 12 pocket straps to hold all your tools in place with a durable water resistant base to protect it from the elements. It also has a hard, moulded front pocket for delicate items.



Order Code
93AJ2404

TR-600-HIK PAPER KIT, VERSAFLO, HEAVY INDUSTRY, GAS/PARTICULATE/VAPOR, NIOSH



TR-600-HIK heavy industry PAPER kit for rugged operations such as industrial, demolition, grinding, metal finishing and casting. The air purifying respirator takes the entire Versaflo system to new levels of confidence, control and comfort.



Order Code
57AJ1089

ASK-39793 MAT ROLL, DISSIPATIVE, VINYL, BLUE, 24" X 30', STATFREE B2 PLUS SERIES



ASK-39793 is a dark blue STATFREE® B2 plus dissipative vinyl roll. Multi-layer vinyl Dissipative (1 x 106to <1 x 109 ohms Rt) Top Layer. Conductive mesh inner layer. Conductive (<1 x 106Rtt) bottom layer.



Order Code
62AJ7876

91-XC2-US-05H IONIZER, BENCHTOP, EXTENDED COVERAGE, HEATED, 120 V, 14.13" X 7.2" X 6.5"



Simco-Ion's new Aerostat XC2 provides complete wide area ionization protection. As with its' predecessor, the Aerostat XC2 Ionizing Blower, the Aerostat XC2 is designed and built for reliable, long-term static control for a variety of electronic, semiconductor, flat-panel display and medical assembly applications.



Order Code
72AC8590

5-1987 WIRE STRIPPER, ERGO-ELITE, 26-16 AWG CAPACITY WIRES



The 55-1987 is a Wire Stripper with 16 to 26GA wire, ergonomically engineered for superior comfort, balance and control, tool constructed of rigid polyurethane reinforced with carbon fiber providing excellent strength at 40% the weight of metal hand tools.



Order Code
18K8801

26501-LED-8D MAGNIFIER, LED, 3X, MAGNIFICATION, 45" , ARM LENGTH



The 26501-LED-8D is a ProVue 8-diopter LED Magnifying Lamp with 45-inch adjustable arm length. The ProVue LED 8D workbench lamp reduces eye strain and vision fatigue for high-volume industrial users.



Order Code
28Y7449

8511 PARTICULATE RESPIRATOR



The 8511 Particulate Respirator features the proprietary 3M™ Cool Flow™ Valve and helps provide comfortable, reliable worker respiratory protection. It is ideally suited for hot/dusty work settings that require long periods of wear.



Order Code
31M7908

G3 BLUE SHOWER CLEANER/DEGREASER



Non-flammable & powerful cleaner. Maintenance cleaners clean oil and contaminants off of metal parts, printed circuit boards, barcode instruments, switch boxes, gear boxes, and engines.



Order Code
81C8423

SGB CONTACT TREATMENT GREASE



SGB will significantly increase contact performance and lifetime.



Order Code
10WX6357

DEOXIT D5 SPRAY



Unique contact cleaner, rejuvenator, conductivity enhancer and lubricant. Dissolves oxidation and corrosion on metal surfaces.



Order Code
42J5218

POW-R-WASH VZ CONTACT CLEANER



Effective nonflammable solvent cleaner for electrical and electronic contacts and assemblies.



Order Code
97H7682

DOWSIL 3145 RTV MIL-A-46146 ADHESIVE SEALANT - CLEAR



Clear, non-flowing adhesive with high tensile strength and elongation, MIL-A-46146 Group II tested.



Order Code
18K8092

IS800 SERIES ONE-COMPONENT, READY-TO-USE SILICONE ADHESIVE SEALANTS



Paste-like consistency and cure to silicone rubber on exposure to atmospheric moisture at room temperature.



Order Code
00Z1579

WXSMART ALL-IN-ONE SMART SOLDERING STATION



All-in-one station designed to give you maximum connectivity, traceability, and process control.



Order Code
53AK8855

LEADED NO-CLEAN WIRE SOLDER SN60PB40 (60/40) SPOOL



Lead solder wire Alloy Sn60Pb40, Flux content 2.2%



Order Code
71AJ9518

HCT-910 HOT AIR REWORK SYSTEM



Hot air rework system offers a versatile solution for a wide variety of production and rework applications.



Order Code
42AK3688

MX-5211 REWORK STATION



Configured with the Advanced™ Handpiece. Highly effective for soldering applications.



Order Code
48W5012

951SX SOLDERING STATION



The 951SX is a LONER® 120V 220W temperature controlled Soldering Station which features an industry standard, highly dependable and cost efficient soldering station.



Order Code
92F8585

WELLER WE1010NA SOLDERING STATION



WE1010NA works best for professional soldering jobs, PCBs, electronic kits, low-voltage wiring, and cable assembling.



Order Code
45AC9886

10 PORT GIGABIT MANAGED ETHERNET SWITCH



Gigabit Managed Ethernet Switches offer L2 features plus advanced L3 features such as Static Route for Enterprise networks via fiber or copper connections.



Order Code
06AC4115

BLACK BOX LMC280 SERIES LMC280A FIBER MEDIA CONVERTER



Converter provides a way to add fiber to your existing network infrastructure. It converts 10/100Base-T(X) to 100BaseFX. Supports MDI/MDIX auto detection to avoid use of x-over cables.



Order Code
33AH5883

ULTIMAKER S7 3D PRINTER



UltiMaker S7 is your gateway to the entire UltiMaker platform. Access all the tools you need to start 3D printing – manage and monitor your prints securely with the UltiMaker Digital Factory, access e-learning courses on the UltiMaker Academy, and more.



Order Code
68AK0804

NEW MULTICOMP PRO STUB END STRIPPER FOR RG6 AND RG59 COAX CABLES

The Multicomp PRO MP010404 is a tool for stripping and prepping coaxial cable in the tightest places, such as MDU boxes, wall plates and most tight places.



Order Code
46AK9128

NEW MULTICOMP PRO CRIMP TOOL FOR RJ11 & RJ45 CAT5, CAT5E, CAT6 UTP MODULAR CONNECTORS

The Multicomp Pro MP010403 is a Dual Chamber Modular connector crimping, stripping, and cutting tool, for RJ11 and RJ45 CAT5, CAT5e, and CAT6 UTP (Unshielded Twisted Pair) modular connectors.



Order Code
46AK9127

METAL FOLDING HEX AND TAMPER STAR KEY SETS

CRV+Chamfer Material with Metal Cover. 7 Pieces 1.5/2/2.5/3/4/5/6mm Metal Folding Hex Key Wrenches



Order Code
29AK2347

TECHNICAL CLEANING BRUSHES

Multicomp Pro now offers a range of technical cleaning brushes with horse hair bristles.



Order Code
77AJ8511

4 PIECE MICRO CUTTING PLIERS KIT

The MP700393 micro cutting pliers are ideal for ESD applications and other precise cutting applications.



Order Code
37AJ4433

HELPING HANDS WITH MAGNIFIER

Clips and magnifier can be adjusted in any direction. Removable, metal sponge tray Robust steel base, Suitable for soldering, PCB and circuit board repairs Lens diameter: 90mm Magnification: 3x



Order Code
36AJ3913

300W SOLDER POT, WITH TEMPERATURE CONTROL AT 200°C TO 480°C RANGE

Corrosion-resistant and heat-resistant alloy solder pot, that is suitable for lead-free operation. The pot heats up quickly with accurate and stable temperature. This solder pot with temperature control from 200 C to 480 C has a beautiful design is reliable and practical.



Order Code
26AJ4698

SOLDER SMOKE ABSORBER/FAN

This Multicomp Pro MP740766 Solder Smoke Absorber has dual function - It can be used as a bench fan or as a solder smoke absorber.



Order Code
26AJ4723

65W ECONOMICAL SOLDERING STATION

MP740686 from Multicomp Pro is a 65W economical soldering station with LCD display screen and temperature range from 392°F to 842°F.



Order Code
24AJ5701

80W SOLDERING STATION, 200°C TO 450°C

The MP740139 is a 80W digital soldering station that heats up fast and provide a fast recovery time. ESD safe with a clear and intuitive LCD display for easy use.



Order Code
39AH0164

48W SOLDERING STATION, 160°C TO 480°C

MP740841 US is a temperature controlled soldering station. It is a temperature adjustable soldering station from 160°C to 500°C. Power 48W. On - Off switch with power-on indicator light. Ideal for general electronics and electrical repairs.



Order Code
50AK8319

SOLDERING REWORK STATION

Introducing MP740131 from Multicomp Pro, which is a 3-in-1 maintenance station. Includes a 15V, 3A DC power supply, 1000W hot air gun & 65W soldering iron.



Order Code
82AH6226

OUTDOOR POE EXTENDERS

Two and Four Channel Outdoor POE Extenders in a Compact, Pole-Mountable, Weather Proof Case.



Order Code
77AJ8514

90 WATT, 1 CHANNEL POE EXTENDER

This compact and cost effective single port PoE injector converts standard 120VAC or 240VAC to low voltage for PoE devices.



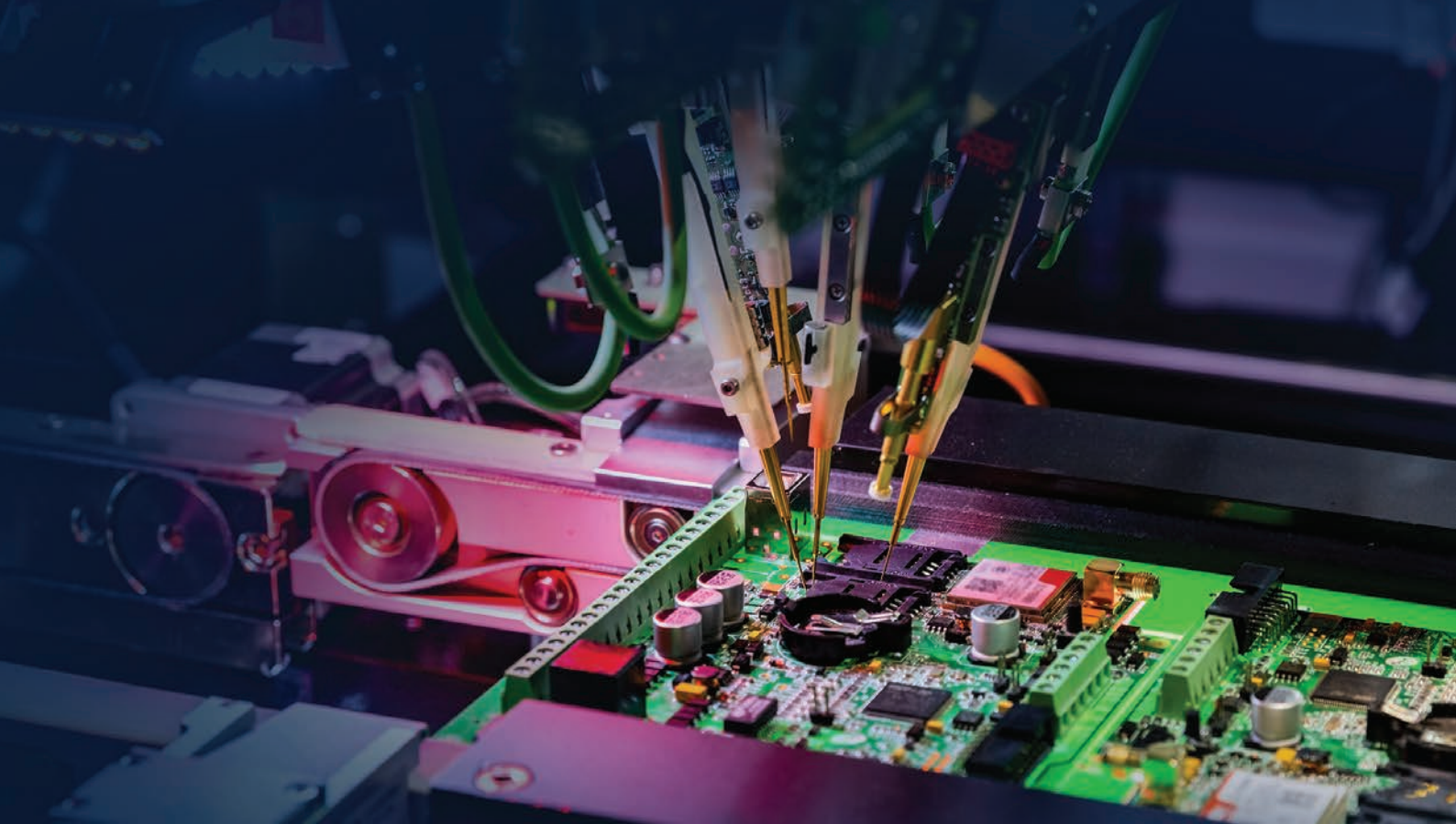
Order Code
82AJ0576

ABS 19" RACKMOUNT FLIGHT CASES

Made with durable ABS, Aluminum, Steel, Industrial quality butterfly clips, Gasket sealed lids for maximum protection against dust, moisture, and other unwanted contaminants.



Order Code
25AC5169



INDUSTRIAL EMBEDDED COMPUTERS

Enabling Next Generation of Industrial Applications

We offer the latest cutting-edge industrial embedded computers designed for use in today's most demanding industrial IoT and edge computing environments.

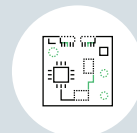
To give you peace of mind, our industrial computers help reduce downtime and prevent failures. Embedded computers from industry-leading suppliers are available in a variety of form factors that are ideal for space-constrained implementations and are engineered for performance and reliability.



Rugged for harsh environments



Multiple connectivity



Compact form factors



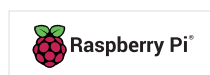
Compliance and support



Long time availability



Extended I/Os



RASPBERRY PI COMPUTE MODULE 4 IO BOARD


The Raspberry Pi Compute Module 4 IO Board (CM4IO) is designed to assist in the development of products that make use of the Raspberry Pi Compute Module 4.



Order Code
86AH2064

RASPBERRY PI COMPUTE MODULE 4, 8GB RAM, 32GB EMMC, WITH WIFI AND BLUETOOTH


Raspberry Pi Compute Module 4 harnesses the compute power of the popular Raspberry Pi 4 Model B, bringing it to a smaller form factor suitable for integration into products.



Order Code
92AH8122

ARDUINO PORTENTA H7


Program it with high-level languages and AI while performing low-latency operations on its customisable hardware.



Order Code
67AH8877

ARDUINO PORTENTA X8

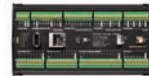

The groundbreaking Portenta X8 is a powerful, industrial-grade System On Module (SOM) with Linux OS preloaded onboard, making it a plug-and-play solution capable of running device-independent software.



Order Code
34AK1684

PORTENTA MACHINE CONTROL BOARD


The Portenta Machine Control is a fully-centralised, low-power, industrial control unit able to drive equipment and machinery.



Order Code
57AJ5472

BEAGLEBONE BLACK


BeagleBone Black is a development platform for developer. Boot Linux in under 10 seconds and get started on development in less than 5 minutes with just a single USB cable.



Order Code
88AH7402

BEAGLEBONE BLACK INDUSTRIAL


BeagleBone Black Industrial answers the need for an industrial rated single board computer with extended temperature range.



Order Code
88AH7403

LATTEPANDA V1, 4GB/64GB, WIN10 ENTERPRISE


4GB RAM LattePanda Windows 10 mini PC with 64GB eMMC memory. This model of LattePanda V1 - 4GB/64GB includes an activated edition of Windows 10 Enterprise LTSC.



Order Code
87AH5885

LATTEPANDA 2 ALPHA 864S, 8GB/64GB, WIN10 PRO


LattePanda 2 Alpha 864s (Win10 Pro activated) is a high-performance, pocket-sized SBC (single board computer) with low power consumption that runs full Windows 10 or Linux operation system.



Order Code
87AH5899

LATTEPANDA 3 DELTA BOARD, 8GB/64GB, WIN 10


LattePanda 3 Delta 864 - The Fastest Pocket-sized Windows/Linux Single Board Computer with Win10 Enterprise License (8GB/64GB).



Order Code
31AK8094

NVIDIA JETSON NANO MODULE, 4GB/16GB


The NVIDIA® Jetson Nano™ module is opening amazing new possibilities for edge computing. It delivers up to 472 GFLOPS of accelerated computing, can run many modern neural networks in parallel.



Order Code
62AK4312

NVIDIA JETSON XAVIER NXMODULE, 8GB/16GB


With 8GB RAM and 16GB EMMC the NVIDIA® Jetson Xavier™ NX brings supercomputer performance to the edge in a compact system-on-module (SoM) that's smaller than a credit card.



Order Code
62AK4313

NVIDIA JETSON XAVIER NX MODULE, 16GB/16GB


With 16GB RAM and 16GB EMMC the NVIDIA® Jetson Xavier™ NX brings supercomputer performance to the edge in a compact system-on-module (SoM) that's smaller than a credit card.



Order Code
62AK4314

NVIDIA JETSON XAVIER DEVELOPER KIT, 8GB/16GB


With 8GB RAM and 16GB EMMC the reComputer J20-series are compact edge computers built with NVIDIA advanced AI embedded systems: Jetson Xavier NX and Seeed reference carrier board (J202).



Order Code
62AK1978

EDGEBOX-RPI-200 - INDUSTRIAL EDGE CONTROLLER 4GB RAM, 16GB EMMC, WIFI


EdgeBox-RPI-200 series are all-in-one Raspberry Pi-based industrial edge computing controllers, combining multiple industrial purposes.



Order Code
62AK4319

RS-485



The 3105A 010500 is a 1-pair 500ft Shielded Cable with 22AWG stranded tinned copper conductors and Datalene® foam polyethylene insulation.



Order Code
88K2138

RS-232



The 9535 060100 is a 5-conductor chrome shielded Computer Cable with semi-rigid PVC insulation, tinned copper drain wire, tinned copper conductors and PVC jacket. The computer cable features Beldfoil® aluminum foil-polyester tape shield (100% coverage).



Order Code
03F1633

RS-485



Belden 9841 1-pair low capacitance Computer Cable with 24AWG stranded (7 x 32) tinned copper conductors, polyethylene insulation, overall Beldfoil® aluminum foil-polyester tape (100% coverage) + tinned copper braid shield (90% coverage) and chrome PVC jacket.



Order Code
05F1930

SHIPBOARD AV



The 8723SB 0101000 is a 1000ft 2-pair 4-conductor audio control interconnect Shipboard Cable with 22AWG stranded (7 x 30) tinned copper conductors, polypropylene insulation, 100% Beldfoil® aluminum foil-polyester tape shield (100% coverage) and black low smoke zero halogen (LSZH) jacket.



Order Code
1179042

ENVIROFLEX RG316



RG316D/RD316 LSFH, 50 Ohm, 6 GHz, 105°C, ø3.16 mm, RADOX® jacket, Flame retardant, UL AWM style 3651, CPR qualified



Order Code
89AH1615

ETHERLINE CAT5E FOR INDUSTRIAL



ETHERLINE® TRAY CAT.5e cables are designed for flexible applications. Designed with a foil and braid shield, the cable is protected against EMI and can be used in areas where reliable transmission is key.



Order Code
69AC7434

OLFLEX TRAY II CY



Ölflex® Tray II CY is an Industrial Grade Shielded Multiconductor Tray Cable with superior oil performance for long cable life. It has a pressure-extruded jacket and fine copper stranding for excellent flexibility. With UL TC-ER approval, no conduit is needed reducing material costs and saving on labor.



Order Code
69AC7456

FIT221 HEAT SHRINK TUBING



The FIT-221-1/2 WH105 is a 20ft white multipurpose irradiated polyolefin Heat Shrink Tube ideal for harnessing, wire bundling, strain reliefs or any applications where components must be insulated or packaged. FIT® 221 flame-retardant tubing has a shrink ratio approximately 2:1 at 121°C.



Order Code
97F8956

XTRA GUARD FLEX CONTROL



The 65818 SL005 is a 18-core Unshielded Cable with bare copper conductor and a lubricated PVC insulator. This multi-core Xtra-Guard® standard light-to-moderate flex control cable comes with an oil-resistant slate PVC jacket.



Order Code
91F2574

PTFE WIRE



The 5853 BK005 is a 0.14mm² black Hook-up Wire with PTFE insulation and silver-plated copper (SPC) conductor. Suitable for various applications, whether it's as straightforward as a control cabinet in a protected environment or as specialized as a machine tool on the factory floor.



Order Code
02F7523

CLT SLEEVING



Corrugated loom tube protects cables from impact and abrasion. Slit for easy installation onto a bundle of wires or a pre-assembled harness assembly. UL94-HB flammability rating and a maximum temperature rating of 122°F (50°C)



Order Code
96F4123

NYLON 6.12 CABLE TIE



Cable Tie, 188MM, Nylon 6/12, 50LB ROHS Compliant: YES



Order Code
68AK6020

PAN STEEL CABLE TIE



MLT series Pan-Steel® self-locking cable tie speeds up installation with a unique self-locking head design that locks into place at any part of the tie body. Provides additional edge protection and prevents corrosion between dissimilar metals.



Order Code
84F1854

2922NH CABLE GLAND



The 2922NM is a 1/2-inch straight liquid-tight Cord Connector made of nylon. The Ranger™ series non-metallic provides extended range with superior strain relief. Reduced overall size, fits into tighter space. Gland nut designed to restrict cable bending.



Order Code
48F2928

ERG50 CABLE MANAGEMENT TOOL



The ERG50 tool from Thomas & Betts is a cable tie installation tools. This tool is used for cable tie tensile strength from 80N to 220N. The ERG50 provide a superior level of reliability and performance combined with enhanced ergonomics and comfort of use.



Order Code
22M0151

TRIM TRIO® WATERPROOF CONNECTORS



The UTG61412PN from Souriau is a plastic circular cable plug connector housing with 12 pin contacts. This connector has shell size of 14. UTG series connectors are economical, lightweight and have robust metal locking system.



Order Code
16F5735

M12 SENSOR CONNECTORS



Connector System for machine industrial automation and control applications provides a solution for the increasing needs of sensor connections that safely and reliably ensures the communication in industrial environments.



Order Code
97Y2334

M12 PUSH-PULL CONNECTORS



The SACC-M12MS-8CON-PG9-M is a 8-position straight M12 Plug-in Connector with Au plated CuZn contact, PA carrier contact and grip body, zinc die-cast/nickel-plated knurls and NBR sealing. Flexible connectors for on-site assembly.



Order Code
70W0559

HD SERIES HEAVY DUTY CONTACT



HD Series of Heavy duty connector, copper alloy crimp; gas-tight and corrosion-resistant.



Order Code
10B7656

AT SERIES CRIMP



Amphenol AT Series stamped & formed contacts designed for heavy duty applications to accommodate 4AWG wire size, nickel plated.



Order Code
71AH0481

900 SERIES BUCCANEER



The PXA911/07/P from Bulgin is a Buccaneer 7 Pole flex cable connector plug.



Order Code
14J6734

APD SERIES CONNECTORS



The APD-1BS-K2 is a 4-way high-power plug with silver-plated copper-alloy contacts. This APD series plug has a PBT housing and a PA 66 coupling nut.



Order Code
65T3409

NANO-CHANGE SERIES CONNECTORS



The N03MA03124 is a 3-pole straight male Field Attachable Connector with gold-plated brass contacts. The Nano-Change® (M8) industry standard connector is rugged, space-saving and sealed connector for miniature sensors and actuators in industrial control applications.



Order Code
12N2328

CGRID III HEADER



CGrid III 40 contact through hole pin header, versatile design breakaway header, gold plated contacts.



Order Code
60H4193

HAN E SERIES CONTACTS



Han E Series heavy duty contacts feature copper alloy, gold plated contacts for 10AWG wire ideal for industrial design.



Order Code
49AK6843

CPC SERIES 1



Rugged, cost-effective connectors that can be used to provide power input and output to and from virtually any device. The use of CPC cable assemblies enables customers to reduce installation time, meet harsh and space saving requirements.



Order Code
46F313

CAPLOCK & PLUGLOCK LOCKING ACCESSORIES FOR 38999, RJFTV, USBFTV CONNECTORS AND CAPS



CapLock is a locking ring that allows a Cap to lock onto a receptacle to secure the port access. PlugLock is a locking ring that allows a plug to lock onto a receptacle to secure the plug to receptacle connection.



Order Code
41AK2416

DUALOBE SERIES RECTANGULAR POWER CONNECTOR



Dualobe Series PCB Mount Rectangular Power connector, 15 contacts, Surface Mount, with termination screws.



Order Code
08H4189

MICROFIT HEADER, BLIND MATE



MicroFit 3.0 Family is rated up to 5.0A at a small-form 3.00mm pitch. Dual row header features guides for blind mating, heavy duty applications.



Order Code
01AH1254

MEGA-FIT OVERMOLDED CABLE ASSEMBLY



Molex Mega-Fit Overmolded Cable assembly, 2 position receptacle 19.7" length wire; many options available.



Order Code
88AH3256

HAN MODULAR COMPACT



Han Modular series of heavy duty connector hood features side cable entry mounting, die-cast zinc with nickel plated finish and is for use in -40°C to +125°C temperature range



Order Code
29H1466

MAGNETIC 5A CONNECTORS



The MP magnetic connectors are a fantastic solution if you require a 2 contact connector, Nd-Fe-B magnetic connectors able to withstand at least 5000 mating cycles. Cable connector available as in-line or right angle and comes with 2m 2 core cable.



Order Code
64AH1568

MINI I/O CONNECTORS



Rectangular connectors that transfer data between devices in industrial applications. Supporting Power over Ethernet (PoE), PoE+ and PoE++ (IEEE802.3at and IEEE802.3bt) and Data rates from 10Mbps up to 10Gbps.



Order Code
40Y2963

IP67 RJ45 / USB CONNECTORS



For data communication in harsh environments. CONEC has developed USB and RJ45 connectors in plastic, metalized plastic or full metal shells with IP67 protection IP67 for use where dust and spray water occur.



Order Code
61AK4816

MICRO D CABLE ASSEMBLIES



High density miniaturized connectors supporting the demand for environmentally safe, high temperature and ruggedized moisture-sealed interconnects.



Order Code
75AH8605

INDUSTRIAL ELECTRICAL CONNECTORS



A comprehensive range of CEE Connectors available in IP44 & IP67 variants. Ruggedized Male & female options in 3, 4, & 5 poles. Complies to CEE/IEC 60309-1/60309-2. Suited to many applications including, Industrial, Factory & Warehousing, Machinery, Workshops plus many more.



Order Code
67AK5680

IP67 MP-Y13 / MP-Y21 BAYONET POWER CONNECTORS



A robust range of connectors incorporating bayonet couplings for quick and easy connection/disconnection. Panel mount, cable mount and in-line cable mount options allow versatility. The MP-Y13 series offers up to 13A / 250V and MP-Y21 series up to 30A / 500V.



Order Code
64AH1645

BRAD INDUSTRIAL ETHERNET CONNECTORS



Bayonet Style and threaded RJ-45 connectors designed to Ethernet specifications. Provides reliable connectivity in harsh industrial automation environments.



Order Code
02AC9677

MACHINED MICRO-D SPACE SAVING CONNECTOR TECHNOLOGY



Machined Micro-Miniature Interconnect for Cables, Boards and Panels Hand Held & Portable Devices, Wireless Base Stations, Military Telematics, DC/DC Power Supplies, Test & Measurement, Industrial Robotics.

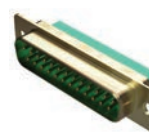


Order Code
31AJ9720

M24308 CONNECTORS



Small enough to fit into tight spaces and with proven reliability, MIL-DTL-24308 connectors are an ideal choice for mission-critical tasks where connector performance cannot be a question. Positronic has held its position on the MIL-DTL-24308 QPL for over 40 years.



Order Code
41AJ7431

HEAVY DUTY CONNECTORS



A full range of heavy-duty inserts, housings, crimps and accessories. These connectors have been created for applications that are subjected to harsh environments or where high vibration can cause standard connectors to fail. Ideal for food & beverage manufacturing, packaging machines, conveyor belt systems, railway, oil & gas.



Order Code
32AK0456

IP67 M12 PUSH-PULL CONNECTORS



The MP M12 push-pull connectors are a range of chrome plated brass connectors that are both solid enough to be used within tough environments whilst also being aesthetically pleasing. 12mm panel cutout size, push-pull coupling, 2-9 poles, rated up to 13A / 250V, minimum of 500 mating cycles.



Order Code
64AH1717

IX INDUSTRIAL® ETHERNET INTERFACE



Miniaturized alternative to the RJ45 for IIoT and industry 4.0. Smaller and more robust IP20 plug-in connection which can still produce Cat 6A performance for 1/10Gbit/s Ethernet.



Order Code
78AC4930

SINGLE PAIR ETHERNET IP20 CONNECTORS



Single Pair Ethernet (SPE) connectors for Industrial applications bring direct Ethernet connectivity to peripheral devices like sensors, actuators, and vision system cameras that operate at speeds up to 1Gb/s.



Order Code
62AJ3553

USB TYPE C 240 W POWER DELIVERY



Avoid the frustration of product to failure with GCT's range of high reliability USB Type-C connectors rated at 20,000* cycles which is twice the industry standard.



Order Code
86AH2022

/ A WORLDWIDE TEAM WITH A LOCAL FOCUS



Headquarters & Offices in NA

US newark.com	Mexico mexico.newark.com	Canada canada.newark.com
-------------------------	------------------------------------	------------------------------------



Newark

AN AVNET COMPANY

BUILD AND MAINTAIN YOUR INDUSTRIAL CONTROL PANEL FOR 20% LESS*

From the enclosure outside, the components within, and everything else that keeps them operating safely – engineers choose Multicomp Pro.

Developed by our engineers for engineers like you, Multicomp Pro products and components meet the quality standards engineers require and the value they need to build and maintain industrial control panels at a lower cost without sacrificing quality.

- > Cable & Cable Management
- > Tools
- > Outside the Panel
- > Inside the Panel
- > Panels
- > Converters



*Typically 20% less than other brands

multicomp **PRO**